

CELINE-2 OFFERS LIGHT QUALITY FOR THE MOST DEMANDING VISUAL TASKS

ESY!

- > UP TO 4600 LUMENS
- > UP TO 139 LUMENS PER WATT
- > FLICKER FACTOR: 0

FOR ESYLUX LIGHT CONTROL ELC, DALI, DALI-2 OR ON/OFF

From human centric lighting and presence and daylight dependent constant light control to simple demand-driven light switching, **CELINE-2** series recessed lights offer:

- Glare- and flicker-free light quality for all forms of light control
- Optional driver sets for maximum compatibility

PERFORMANCE FOR SIMPLICITY

ESYLUX Asia Ltd. | sales@esylux.com.hk | www.esylux.com.hk

BRIGHT LIGHTING

For ceiling systems with hidden or visible mounting rails

Plug-and-play connector for system lights featuring ESYLUX Light Control (ELC)

Suitable for use in other lighting systems when using driver sets (available as an optional accessory)

Variants with Tunable White (2700 - 6500 K) featuring SymbiLogic technology for energy-efficient Human Centric Lighting (HCL)

Homogeneous illumination and a long service life due to the backlight layout of the LEDs

Suitable for screen-based workstations in accordance with DIN EN 12464-1 (UGR ≤ 19). No additional accessories required for installation

Flicker-free light for healthy, fatigue-free working

Accessories: Ceiling flush mounting frame and ceiling surface mounting frame

Robust, durable metal housing, front made from a single piece

High-quality PMMA plastic diffuser: DDP OP (micro-prismatic, opal) or DDP TR (micro-prismatic, transparent)



- Energy-efficient lighting with high light quality
- Plug-and-play connector for system lights featuring ESYLUX Light Control (ELC)
- Easy integration for DALI, DALI-2, ON/OFF with ESYLUX driver sets available as an optional accessory
- Powerful tunable white variants for energy-efficient Human Centric Lighting

Together with intelligent sensor-based light management, the LED recessed lights in the CELINE-2 series provide top-quality lighting in workplaces such as offices, educational institutions and medical facilities.

Furthermore, demand-driven control lowers energy costs, reduces CO₂ emissions and ensures that the long service life of the built-in LEDs is fully and reliably utilised.

5 YEARS
MANUFACTURER WARRANTY



Tunable White
2700 - 6500 K

System lights featuring ESYLUX Light Control ELC Technology and SymbiLogic technology for energy-efficient Human Centric Lighting

ELC

With accessories:

DALI **DALI-2**



Fixed light colour
3000 K / 4000 K

System lights featuring ESYLUX Light Control ELC

ELC

With accessories:

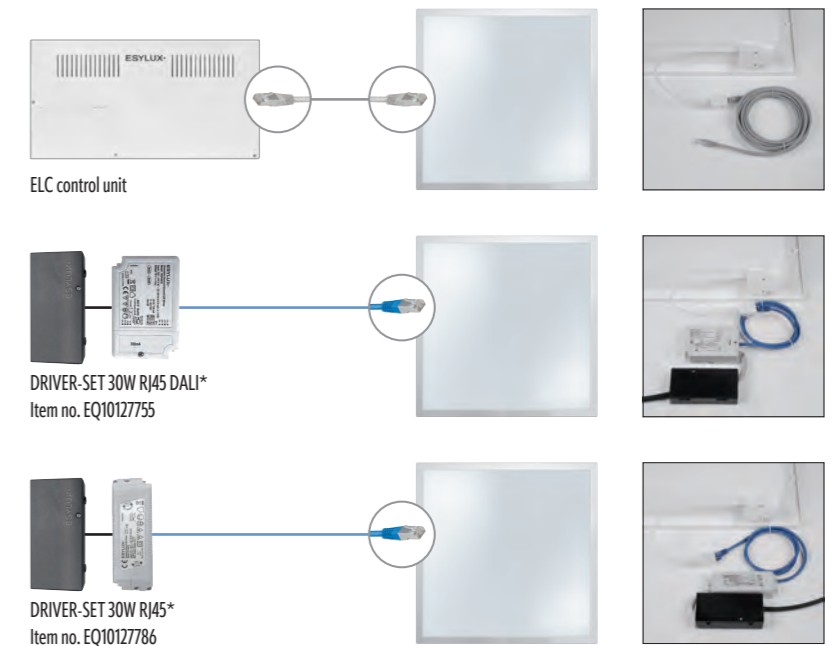
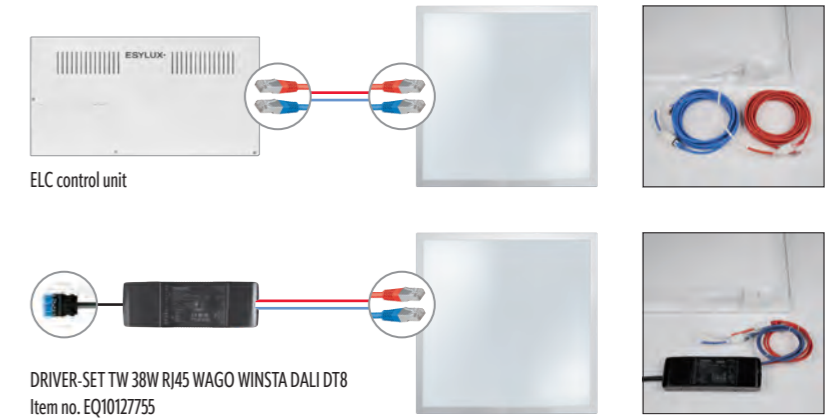
DALI **DALI-2**

With accessories:

ON/OFF

MAXIMUM COMPATIBILITY FOR COMPLETE PLANNING SECURITY

Regardless of which building you are planning for, CELINE-2 offers you the most flexibility when choosing your control system due to its simple plug-and-play RJ45 connector for:



* Also available with WAGO WINSTA* connector (page 10).

HUMAN CENTRIC LIGHTING HCL

WITH TUNABLE WHITE FOR BIOLOGICALLY EFFECTIVE LIGHT

CLASSROOM SOLUTIONS: CONTROL VIA ELC SYSTEM LIGHT WITH SYMBOLOGIC



CELINE-2 PNL 625 DDP TR
4200 8TW IP20 ELC



SMARTDRIVER-2 TW IR 2C+2 x4 ELC



PD-C 360i/24 ELC



System lights featuring ESYLUX Light Control ELC can be easily installed, grouped, scaled and networked by taking advantage of their plug-and-play setup. System variants with SymbiLogic technology also automatically provide the best lighting in the workplace due to energy-efficient Human Centric Lighting at an optimum price/performance ratio.

PARTS LIST

Quantity	Product name	Item no.
12	CELINE-2 PNL 625 DDP TR 4200 8TW IP20 ELC	EQ10132414
1	PD-C 360i/24 ELC	EP10427619
1	PD-C 360i/8 ELC	EP10427602
1	SMARTDRIVER-2 TW IR 2C+2 x4 ELC	EC10431418
1	SMARTDRIVER-2 TW IR 2C+2 x8 ELC	EC10431494
2	CABLE-SET RJ45 10m TW x6	EC10431173
1	PUSH BUTTON x8 CLASSROOM ELC	EC10431241
1	ACTUATOR SEMI AUTO C4 DALI	EP10427480

SYMBILOGIC™ for energy-efficient Human Centric Lighting.

ALTERNATIVE: BMS PRESENCE DETECTOR AND DT8 DRIVER FROM ESYLUX, DALI CONTROLLER FROM A THIRD-PARTY PROVIDER



CELINE-2 PNL 625 DDP TR
4200 8TW IP20 ELC



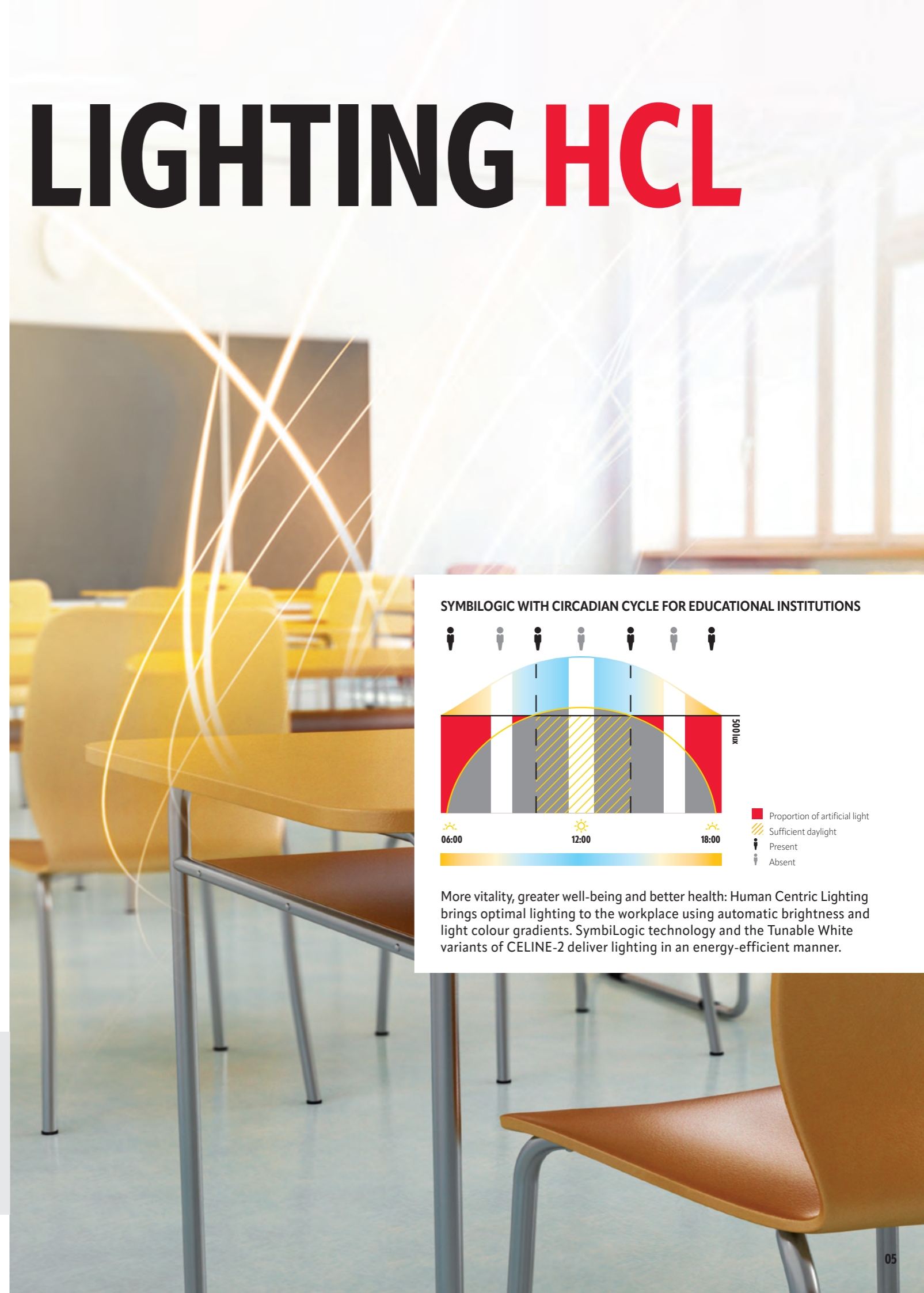
DRIVER-SET TW 38W RJ45
WAGO WINSTA DALI DT8*



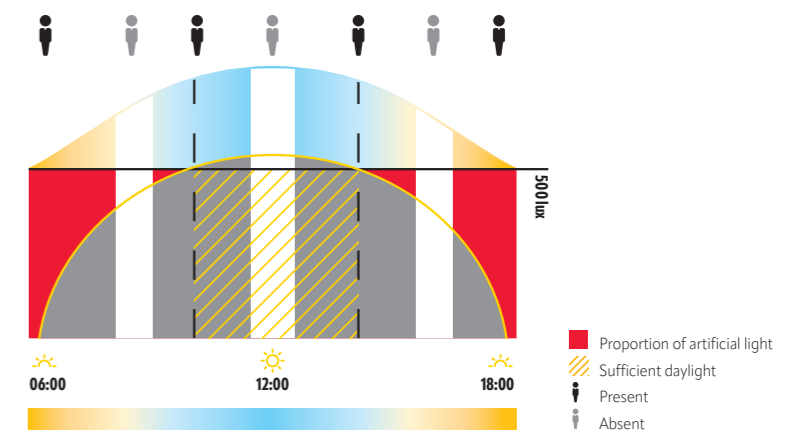
PD-C 360/24 BMS DALI-2

With the DT8 driver from ESYLUX, the powerful Tunable White variants in the CELINE-2 series can also be combined with third-party HCL controllers. The quality sensor of a BMS presence detector in the COMPACT series for DALI-2 can then be used for presence detection and light measurement in all zones.

* Meets the DALI-2 standard.



SYMBOLOGIC WITH CIRCADIAN CYCLE FOR EDUCATIONAL INSTITUTIONS



More vitality, greater well-being and better health: Human Centric Lighting brings optimal lighting to the workplace using automatic brightness and light colour gradients. SymbiLogic technology and the Tunable White variants of CELINE-2 deliver lighting in an energy-efficient manner.

EFFICIENT USE OF DAYLIGHT

WITH FIXED LIGHT COLOUR FOR CONSTANT LIGHTING CONTROL

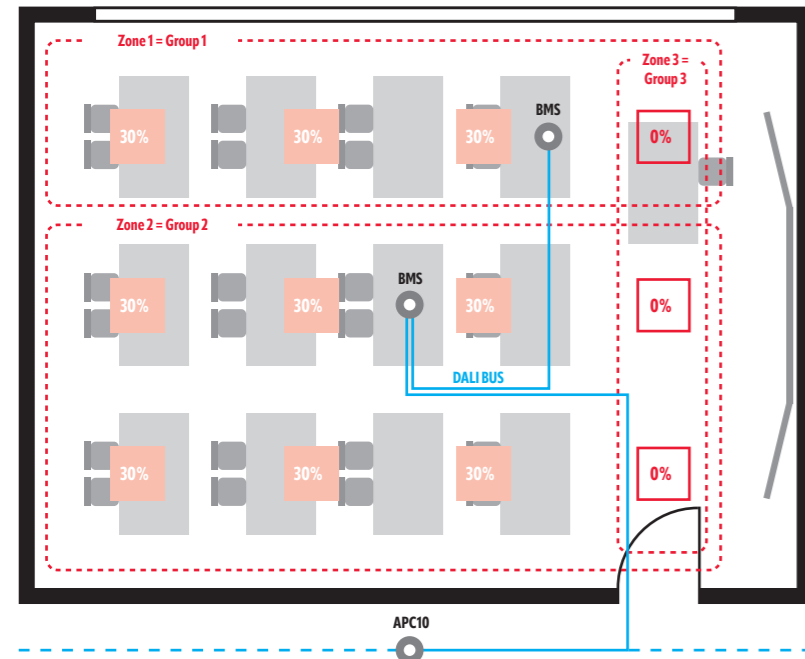
CLASSROOM SOLUTIONS: DALI-2 CONTROL VIA APC10 PRESENCE DETECTOR



CELINE-2 PNL 625 DDP TR
4400 840 IP20 ELC

DRIVER-SET 30W RJ45 DALI*

PD-C 360bt/8 APC10
PS plus DALI-2



APC10 presence detectors for DALI-2 provide multi-room, decentralised light control of up to 16 light groups with BMS presence detectors as input devices. In classrooms, this enables the lighting of individual room zones to be customised to suit particular applications and overridden by scene in each lesson.

PARTS LIST

Quantity	Product name	Item no.
12	CELINE-2 PNL 625 DDP TR 4400 840 IP20 ELC	EQ10132407
12	DRIVER-SET 30W RJ45 DALI*	EQ10127854
1	PD-C 360bt/8 APC10 PS plus DALI-2	EP10428142
1	PD-C 360/24 BMS DALI-2	EP10428210
1	PD-C 360/8 BMS DALI-2	EP10428203

* Meets the DALI-2 standard.



ALTERNATIVE: DALI BROADCAST WITH DUO DALI PRESENCE DETECTORS



CELINE-2 PNL 625 DDP TR
4400 840 IP20 ELC

DRIVER-SET 30W RJ45
WAGO WINSTA DALI*

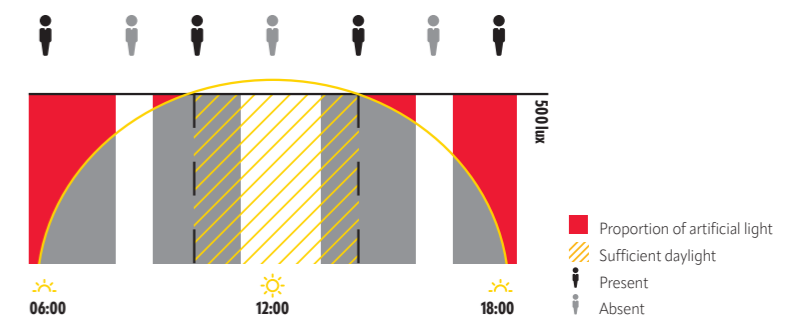
PD-C 360i/24 DUO DALI
WAGO WINSTA CodeI

As an alternative option that provides a simple introduction to DALI technology, DUO DALI presence detectors in the COMPACT series control two light channels in broadcast mode.

* Meets the DALI-2 standard.



PRESENCE AND DAYLIGHT DEPENDENT CONSTANT LIGHT CONTROL



Automatic adjustment of artificial light to the available daylight combined with presence dependent light switching: constant light control creates optimum lighting conditions with a fixed light colour – not to mention high energy efficiency. The CELINE-2 series offers variants with 3000 K or 4000 K for this purpose.

DEMAND-DRIVEN ON/OFF

WITH FIXED LIGHT COLOUR FOR EASY SWITCHING

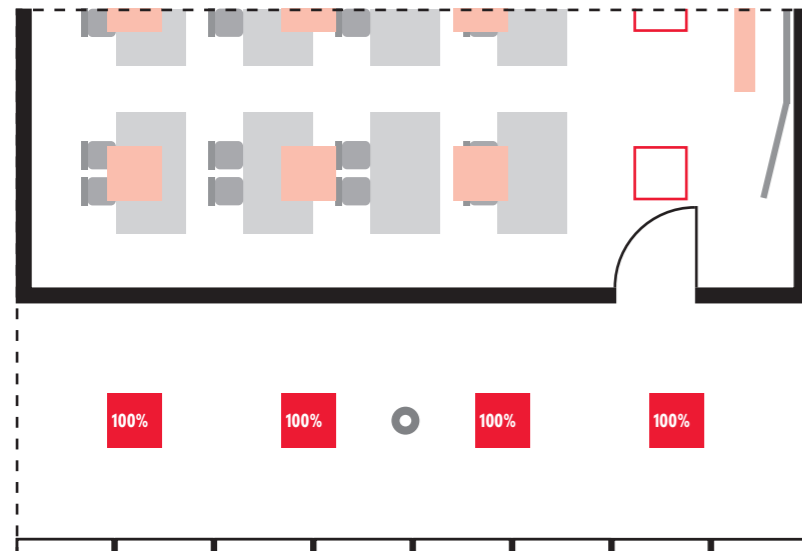
CORRIDOR SOLUTIONS: CONTROL VIA SWITCHING COMPACT PRESENCE DETECTOR



CELINE-2 PNL 625 DDP TR
4400 840 IP20 ELC

DRIVER-SET 30W RJ45

PD-C 360i/24



With its two-piece housing for easy installation and numerous variants for multi-channel light and HVAC control, COMPACT is one of the most successful ESYLUX series. Even when it comes to simple switching, the detectors provide reliable quality – for greater energy efficiency in corridors, for example.

PARTS LIST

Quantity	Product name	Item no.
4	CELINE-2 PNL 625 DDP TR 4400 840 IP20 ELC	EQ10132407
4	DRIVER-SET 30W RJ45	EQ10127786
1	PD-C 360i/24	EP10428067

ALTERNATIVE: WITH WAGO WINSTA® CONNECTOR



CELINE-2 PNL 625 DDP TR
4400 840 IP20 ELC

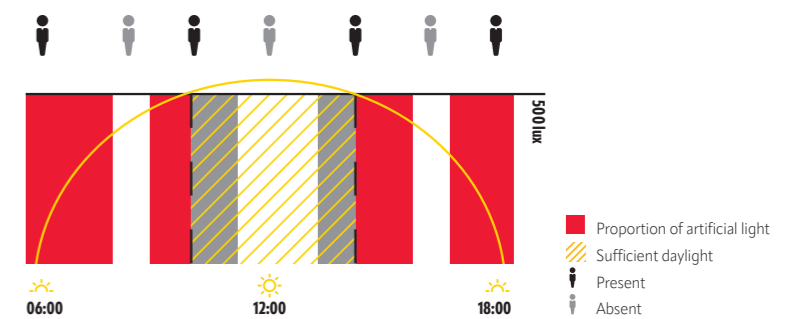
DRIVER-SET 30W RJ45
WAGO WINSTA

PD-C 360i/24 WAGO
WINSTA CodeA

Identical design, compact performance, even simpler installation: We also offer the PD-C 360i/24 presence detector with a WAGO WINSTA® connector and compatible driver set.



PRESENCE AND DAYLIGHT DEPENDENT LIGHT SWITCHING



Use energy only when it is really needed: Even simple presence and daylight dependent light switching provides considerable savings. It also reduces the environmental problem of light pollution at night and its energy efficiency contributes to reducing global CO₂ emissions.

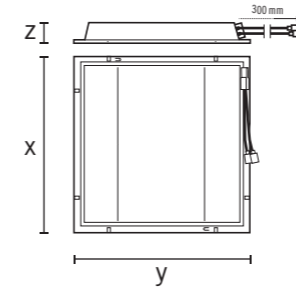
PRODUCT OVERVIEW

Product group / product name	Item no.	Light colour (IEC 1231)	Luminous flux	Rated output P	Luminous efficacy	Unified Glare Rating	Glare suppression	Diffusor	Protection type	Control system	Energy efficiency class	Dimensions (mm)	Core portfolio	New
2700 - 6500 K / 600 x 600 mm / 30 W														
CELINE-2 PNL 600 DDP OP 3800 8TW IP20 ELC (white, similar to RAL 9016)	EQ10132322	8TW	4000 lm	33 W	121 lm/W	<19	DDP	OP	IP20	ELC	LED EEI E	X 596, Y 596, Z 65	•	★
CELINE-2 PNL 600 DDP TR 4200 8TW IP20 ELC (white, similar to RAL 9016)	EQ10132353	8TW	4400 lm	33 W	133 lm/W	<19	DDP	TR	IP20	ELC	LED EEI E	X 596, Y 596, Z 65	•	★
3000 K / 600 x 600 mm / 30 W														
CELINE-2 PNL 600 DDP OP 3600 830 IP20 ELC (white, similar to RAL 9016)	EQ10132308	830	3900 lm	33 W	118 lm/W	<19	DDP	OP	IP20	ELC	LED EEI E	X 596, Y 596, Z 65	•	★
CELINE-2 PNL 600 DDP TR 4000 830 IP20 ELC (white, similar to RAL 9016)	EQ10132339	830	4300 lm	33 W	130 lm/W	<19	DDP	TR	IP20	ELC	LED EEI E	X 596, Y 596, Z 65	•	★
4000 K / 600 x 600 mm / 30 W														
CELINE-2 PNL 600 DDP OP 4000 840 IP20 ELC (white, similar to RAL 9016)	EQ10132315	840	4200 lm	33 W	127 lm/W	<19	DDP	OP	IP20	ELC	LED EEI E	X 596, Y 596, Z 65	•	★
CELINE-2 PNL 600 DDP TR 4400 840 IP20 ELC (white, similar to RAL 9016)	EQ10132346	840	4600 lm	33 W	139 lm/W	<19	DDP	TR	IP20	ELC	LED EEI E	X 596, Y 596, Z 65	•	★

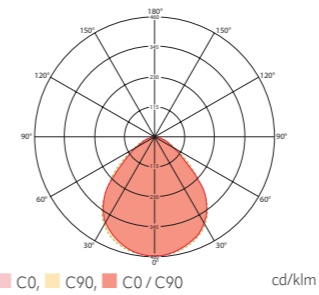
Product group / product name	Item no.	Product description	Dimensions (mm)	Core portfolio	New
Accessories					
Mounting					
MOUNTING FRAME 600 FM WH	EQ10113086	Ceiling flush mounting frame 600 for recessed lights	X 635.4, Y 635, Z 48.2	•	
MOUNTING FRAME 600 SM WH	EQ10113031	Ceiling surface mounting frame 600 for recessed lights	X 613.8, Y 614, Z 85	•	
MOUNTING FRAME 600/625 SM WH	EQ10113468	Ceiling surface mounting frame 600/625 for recessed lights	X 627.2, Y 627, Z 100	•	
Electrical accessories					
DRIVER-SET 30W RJ45	EQ10127786	ON/OFF LED driver set	X 132, Y 45, Z 30	•	
DRIVER-SET 30W RJ45 WAGO WINSTA	EQ10127779	Plug-and-play LED driver set ON/OFF 30 W, WAGO WINSTA*	X 132, Y 45, Z 30	•	
DRIVER-SET 30W RJ45 DALI*	EQ10127854	LED driver set 30 W DALI	X 132, Y 45, Z 30	•	
DRIVER-SET 30W RJ45 WAGO WINSTA DALI*	EQ10127762	Plug-and-play LED driver set 30 W DALI, WAGO WINSTA*	X 103, Y 68, Z 30	•	
DRIVER-SET TW 38W RJ45 WAGO WINSTA DALI DT8*	EQ10127755	Plug-and-play LED driver set DALI DT8, WAGO WINSTA*	X 215, Y 70, Z 31	•	
Remote control					
ESY-Pen	EP10425356	ESY-Pen and ESY-App, two tools for every task: (1) Parameterisation, (2) remote control, (3) light measurement, (4) project management	X 166, Y 24, Z 21.5	•	

* Meets the DALI-2 standard.

PRODUCT TYPES



LIGHT DISTRIBUTION



OUR PLANNING SUPPORT FOR YOUR PROJECT

It's really important to us that our intelligent automation and lighting solutions are easy to implement:

- Our room parts list allows you to conveniently and clearly put together all of our components online
- Our BIM portal gives you access to all 2D and 3D CAD product data in our portfolio
- Our experts are happy to offer you with personalised advice

Contact us at www.esylux.com

www.esylux.com

Photo credits:
iStock: 974684318, 935738260, 135351244

The Bluetooth® word mark and logos are registered trademarks owned by Bluetooth SIG, Inc.

For delivery times and further information on our products, please refer to our website.

© Copyright 2023

08.11.2023