

**NEW!** FOR SAPP® AND WEC®  
CEILINGS FROM INTERALU

# ENERGY-EFFICIENT, HIGH-QUALITY SENSOR TECHNOLOGY FOR CLIMATE CEILINGS. **ESY!**

## KNX & DALI-2

### COMPACT MINI LAMELLA PRESENCE DETECTOR

- Tried-and-tested, high-quality sensor technology for KNX or DALI-2
- Numerous functions available to implement, such as constant light control, energy-efficient Human Centric Lighting, swarm function, orientation light
- Available in white or black version
- Simple, tool-free Snap-in installation
- Protection type IP55

### PERFORMANCE FOR SIMPLICITY

ESYLUX GmbH | [sales@esylux.com](mailto:sales@esylux.com) | [www.esylux.com](http://www.esylux.com)



DALI-2 control units from ESYLUX control up to 16 light groups and offer a comprehensive range of functions. LAMELLA detectors for DALI-2 serve as input devices and provide the control units with information about brightness and human presence from all areas.



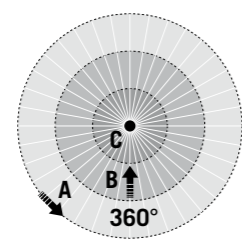
# COMPACT AND HIGHLY FUNCTIONAL

While climate ceilings ensure energy-saving and comfortable temperature control of indoor spaces, sensor-based lighting control from ESYLUX additionally improves wellbeing and energy efficiency in offices, educational institutions and healthcare facilities. Together, they provide a future-proof and sustainable solution for modern buildings.

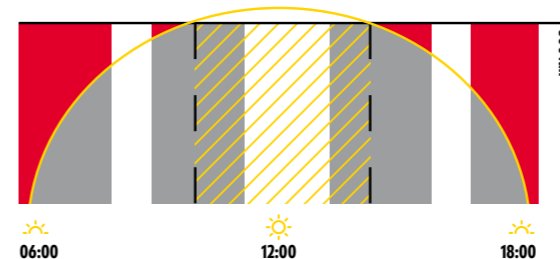


## Detection range (recommended installation height 3 m)

Tangential (A)	Ø 8 m
Radial (B)	Ø 5 m
Presence area (C)	Ø 3 m



- KNX presence detector with protection type IP55
- Presence- and daylight-dependent constant light control
- Two light channels with optional offset control



The most energy-efficient form of light control: presence- and daylight-dependent constant light control using a presence detector.

- Proportion of artificial light
- ▨ Sufficient daylight
- Present
- Absent



PD-C 360i/8 mini LAMELLA KNX WH  
EP10426131



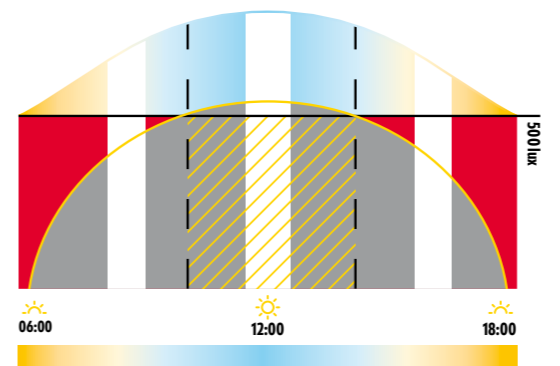
PD-C 360i/8 mini LAMELLA KNX BK  
EP10426148

### Further examples of KNX functions:

- Orientation light
- Alarm
- Twilight switch
- Brightness detection
- Scene telegram via object



- DALI-2 certified presence detector with protection type IP55
- Serves as input device for integration with DALI-2 control units from ESYLUX or third-party manufacturers



Human Centric Lighting improves wellbeing, vitality and health – with energy-efficient implementation by SymbiLogic technology from ESYLUX.

- Proportion of artificial light
- ▨ Sufficient daylight
- Present
- Absent



PD-C 360/8 mini LAMELLA BMS DALI-2 WH  
EP10422836



PD-C 360/8 mini LAMELLA BMS DALI-2 BK  
EP10422843

### DALI-2 control units in the SMARTCONTROLLER series from ESYLUX have numerous functions to improve wellbeing and energy efficiency, such as:

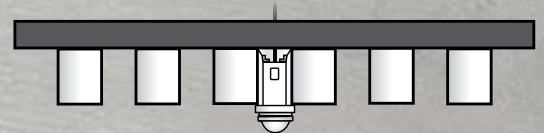
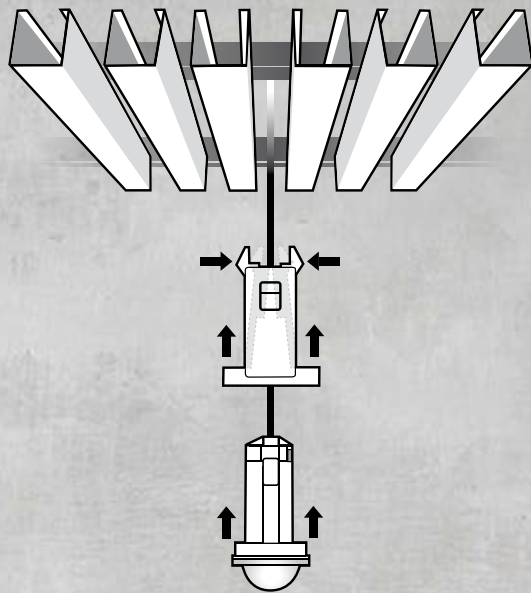
- Energy-efficient Human Centric Lighting (SymbiLogic) or presence- and daylight-dependent constant light control
- Swarm function
- Flexible switching of groups
- Weekday- and time-dependent control
- Orientation light



# SIMPLE SNAP-IN INSTALLATION

LAMELLA detectors can be easily snapped onto the ceiling using the appropriate adapter without the need for any tools. Subsequent adjustments to the position of the detector are very easy, too: Loosen the wiring, push together the sides of the retaining clamp, adjust position, done!

## FOR SAPP® CEILINGS

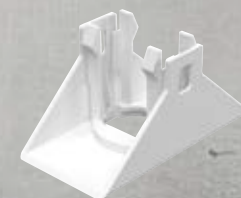
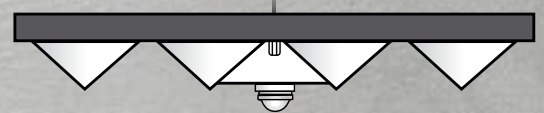
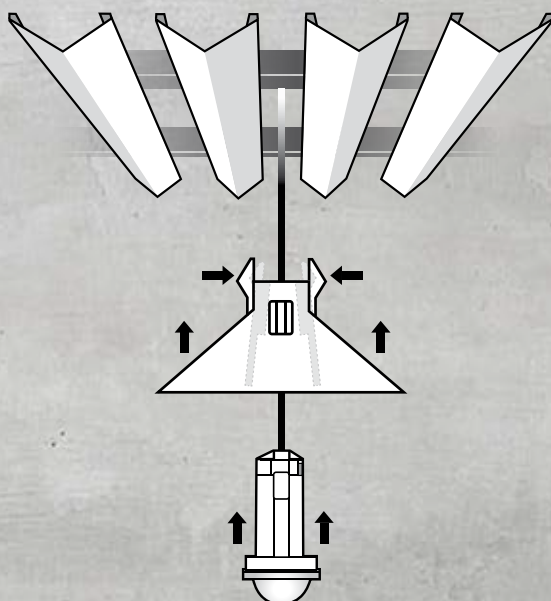


**COMPACT MINI HOLDER SAPP WH**  
EP10422850

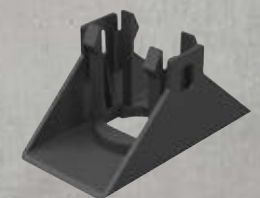


**COMPACT MINI HOLDER SAPP BK**  
EP10422867

## FOR WEC® CEILINGS



**COMPACT MINI HOLDER WEC WH**  
EP10422874



**COMPACT MINI HOLDER WEC BK**  
EP10422881

## PERFORMANCE FOR SIMPLICITY