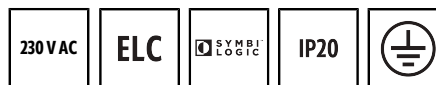


## SMARTDRIVER-2 TW IR 2C+2 x8 ELC

**Item number** EC10431494  
**GTIN** 4015120431494



### Product description

- ELC control unit (ELC=ESYLUX Light Control) with integrated constant lighting control for superb energy efficiency
- SymbiLogic technology for energy-efficient human centric lighting in the workplace
- Plug-and-play connection of up to 8 ELC lights with Tunable White
- Two push button inputs for conventional buttons (230 V)
- Optional 8-button keypad (accessory) for manual override
- Manual override and call-up of scenes in two separate light channels
- Fast plug-and-play connection of lights via RJ45 plug-in connections
- Can be easily networked with additional ELC control units via the plug-in connection
- Basic system designed for a luminaire connection (RJ45) of 3 m
- Expansion possible with DALI lights via integrated DALI bus outputs
- Presence-dependent HVAC switching using a DALI switch actuator (DALI switch), available separately

### Technical data

GENERAL	
Device category	Control
Product information	ELC lighting systems combine compatible components via plug-and-play: ELC main lighting, control unit and sensor system. Alternatively: The ELC lights are also suitable for plug-and-play installation outside ELC lighting systems if suitable driver sets (accessories) are used
User interface	IR remote control, Push button input
Remote controllable	✓
Conformity	CE, EAC, RoHS, WEEE
Warranty	5 years

ATTACHMENT	
Installation type	Recessed mounting
Installation position	Ceiling
Installation dimension	Installation length: 575 mm x Installation width: 285 mm x Installation depth: 125 mm,
Type of connection	Push terminal
Connectable wire cross section	1.5 - 2.5 mm <sup>2</sup>

HOUSING	
Dimensions	Length 555 mm x Width 262 mm x Height 85 mm
Weight	3504 g
Material	Steel, galvanised
Protection type	IP20
Permissible ambient temperature	0 °C...+40 °C

Relative humidity	5 - 93 %, non-condensing
Colour	white

ELECTRICAL VERSION	
Control system	ELC (ESYLUX Light Control), DALI
Protection class	I
Nominal voltage	230 V ~ / 50 - 60 Hz
Output voltage	48 - 48 V DC
Output current	5600 mA
Power consumption	253 W
Stand-by consumption	< 0.5 W

CHANNELS (LIGHTING / HVAC)	
Number of light channels	2
Number of control units per group	5
Number of light groups	10
Push button input lighting	2
Number of HVAC-channels	2
Number of scenes	13
Orientation light	disabled/10 - 50 %, 2 values can be selected
Constant light control	✓
Orientation light duration or time	✓
HCL-lighting control	✓
Number of outputs luminaires ELC	8
Number of outputs luminaires DALI	2

### Factory settings

## SMARTDRIVER-2 TW IR 2C+2 x8 ELC

**Item number**            **GTIN**  
EC10431494            4015120431494

### GENERAL

Sensitivity	100 %
SymbiLogic	✓
Afterglow luminous efficiency	10 %
Afterglow duration	5 min
Orientation light ON	-
Orientation light, depending on brightness	✓
Switching threshold for orientation light	500 lx
Deviation (%)	0 %
Luminous efficiency switch-on value	50 %

Colour temperature switch-on value            4000 K

### CHANNELS (LIGHTING / HVAC)

Channel	C1 Lighting
Operating mode	fully automatic
Level of brightness/switching threshold	500 lx
Switch-off delay time	5 min
Luminous efficiency of orientation light	10 %
Duration of switch-off warning	60 s

## SMARTDRIVER-2 TW IR 2C+2 x8 ELC

<b>Item number</b>	<b>GTIN</b>
EC10431494	4015120431494

### System components

Product designation	Item number	Product description	GTIN
<b>Accessories</b>			
FERRITE-SET x4	EC10429972	Set of 4 ferrite cores (folding ferrite) for shielding up to two RJ45 cables per ferrite core on the SMARTDRIVER-2.	4015120429972
<b>Cable</b>			
CABLE RJ10 10m WH	EC10431500	Connection cable RJ10, 10 m	4015120431500
CABLE RJ10-OPEN END 10m WH	EC10431517	Connection cable RJ10 Open end, 10 m	4015120431517
CABLE RJ11 10m WH	EC10431524	Connection cable RJ11, 10 m, white	4015120431524
CABLE RJ45 3m BL	EC10431548	Connection cable RJ45, 3 m, blue	4015120431548
CABLE RJ45 3m RD	EC10431555	Connection cable RJ45, 3 m, red	4015120431555
CABLE RJ45 5m RD	EQ10019890	RJ45 connection cable, 5 m, red	4015120019890
CABLE RJ45 5m BL	EQ10019982	Connection cable RJ45, 5 m, blue	4015120019982
CABLE RJ45 10m BL	EQ10019999	Connection cable RJ45, 10 m, blue	4015120019999
CABLE RJ45 10m RD	EQ10020155	Connection cable RJ45, 10 m, red	4015120020155
CABLE-SET-2 RJ45 5m TW x8	EC10431982	Connection cable set for SMARTDRIVER x8 TW series	4015120431982
CABLE-SET-2 RJ45 10m TW x8	EC10431999	Connection cable set for SMARTDRIVER x8 TW series	4015120431999
<b>Ceiling-mounted presence detector</b>			
PD-C 360i/8 ELC	EP10427602	Presence detector with 360° field of detection for ceiling mounting	4015120427602
PD-C 360i/24 ELC	EP10427619	Presence detector with 360° field of detection for ceiling mounting	4015120427619
PD 360i/8 BASIC ELC	EB10431357	Presence detector for ESYLUX Light Control with 360° field of detection for ceiling mounting	4015120431357
<b>Push button</b>			
PUSH BUTTON x8 TW ELC	EC10430930	DALI 8 x push button Tunable White	4015120430930
PUSH BUTTON x8 CLASSROOM ELC	EC10431241	DALI 8-way push button	4015120431241
PUSH BUTTON x4 PATIENT ROOM ELC	EC10431258	DALI 4-way push button	4015120431258
PUSH BUTTON x8 PATIENT ROOM ELC	EC10431265	DALI 8-way push button	4015120431265
<b>Recessed light</b>			
CELINE-2 PNL 600 DDP OP 3800 8TW IP20 ELC	EQ10132322	LED light with opal cover (diffuser)	4015120132322
CELINE-2 PNL 600 DDP TR 4200 8TW IP20 ELC	EQ10132353	LED light with prismatic cover (diffuser)	4015120132353
CELINE-2 PNL 625 DDP OP 3800 8TW IP20 ELC	EQ10132384	LED light with opal cover (diffuser)	4015120132384
CELINE-2 PNL 625 DDP TR 4200 8TW IP20 ELC	EQ10132414	LED light with prismatic cover (diffuser)	4015120132414

### Accessories

Product designation	Item number	Product description	GTIN
<b>Accessories</b>			
FERRITE-SET x4	EC10429972	Set of 4 ferrite cores (folding ferrite) for shielding up to two RJ45 cables per ferrite core on the SMARTDRIVER-2.	4015120429972
<b>Cable</b>			
CABLE RJ11 10m WH	EC10431524	Connection cable RJ11, 10 m, white	4015120431524
CABLE RJ10-OPEN END 10m WH	EC10431517	Connection cable RJ10 Open end, 10 m	4015120431517
CABLE RJ45 5m WH	EC10430695	Connection cable RJ45, 5 m, white	4015120430695

## SMARTDRIVER-2 TW IR 2C+2x8 ELC

Item number	GTIN
EC10431494	4015120431494

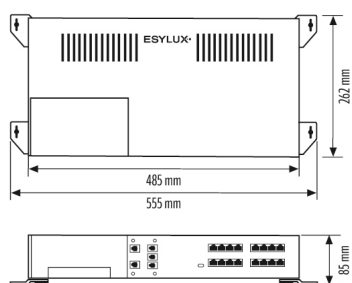
### Accessories

Product designation	Item number	Product description	GTIN
CABLE RJ45 10m WH	EC10430749	Connection cable RJ45, 10 m, white	4015120430749
CABLE RJ45 3m WH	EC10431531	Connection cable RJ45, 3 m, white	4015120431531
CABLE RJ45 3m BL	EC10431548	Connection cable RJ45, 3 m, blue	4015120431548
CABLE RJ45 3m RD	EC10431555	Connection cable RJ45, 3 m, red	4015120431555
CABLE-SET-2 RJ45 5m x4	EC10431906	Connection cable set for SMARTDRIVER x4 series	4015120431906
CABLE-SET-2 RJ45 10m x4	EC10431913	Connection cable set for SMARTDRIVER x4 series	4015120431913
CABLE-SET-2 RJ45 5m x8	EC10431920	Connection cable set for SMARTDRIVER x8 series	4015120431920
CABLE-SET-2 RJ45 10m x8	EC10431937	Connection cable set for SMARTDRIVER x8 series	4015120431937
CABLE-SET-2 RJ45 5m TW x4	EC10431944	Connection cable set for SMARTDRIVER x4 TW series	4015120431944
CABLE-SET-2 RJ45 10m TW x4	EC10431951	Connection cable set for SMARTDRIVER x4 TW series	4015120431951
CABLE-SET-2 RJ45 5m TW x6	EC10431968	Connection cable set for SMARTDRIVER x6 TW series	4015120431968
CABLE-SET-2 RJ45 10m TW x6	EC10431975	Connection cable set for SMARTDRIVER x6 TW series	4015120431975
CABLE-SET-2 RJ45 5m TW x8	EC10431982	Connection cable set for SMARTDRIVER x8 TW series	4015120431982
CABLE-SET-2 RJ45 10m TW x8	EC10431999	Connection cable set for SMARTDRIVER x8 TW series	4015120431999
CABLE RJ45 5m RD	EQ10019890	RJ45 connection cable, 5 m, red	4015120019890
CABLE RJ45 5m BL	EQ10019982	Connection cable RJ45, 5 m, blue	4015120019982
CABLE RJ45 10m BL	EQ10019999	Connection cable RJ45, 10 m, blue	4015120019999
CABLE RJ45 10m RD	EQ10020155	Connection cable RJ45, 10 m, red	4015120020155
CABLE RJ10 10m WH	EC10431500	Connection cable RJ10, 10 m	4015120431500

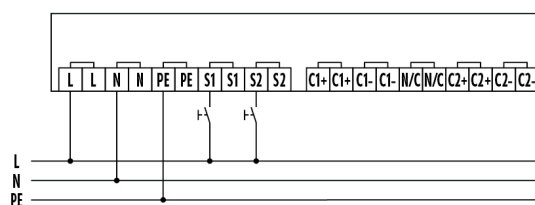
### Electrical accessories

ACTUATOR FULL AUTO C3 DALI	EP10427473	Modul for the conversion of bus commands from the DALI presence detector and other light controls into switching signals (fully automatic)	4015120427473
ACTUATOR SEMI AUTO C4 DALI	EP10427480	Modul for the conversion of bus commands from the DALI presence detector and other light controls into switching signals (semi-automatic)	4015120427480

### Dimension drawing



### Circuit diagram



Standard operation.

## SMARTDRIVER-2 TW IR 2C+2 x8 ELC

Item number	GTIN
EC10431494	4015120431494

### Detailed product description

---

- ELC control unit (ELC=ESYLUX Light Control) with integrated constant lighting control for superb energy efficiency
- SymbiLogic technology for energy-efficient human centric lighting in the workplace
- Plug-and-play connection of up to 8 ELC lights with Tunable White
- Two push button inputs for conventional buttons (230 V)
- Optional 8-button keypad (accessory) for manual override
- Manual override and call-up of scenes in two separate light channels
- Fast plug-and-play connection of lights via RJ45 plug-in connections
- Can be easily networked with additional ELC control units via the plug-in connection
- Basic system designed for a luminaire connection (RJ45) of 3 m
- Expansion possible with DALI lights via integrated DALI bus outputs
- Presence-dependent HVAC switching using a DALI switch actuator (DALI switch), available separately