

## SMARTDRIVER-2 IR 4C+2 x4 ELC

**Item number**      **GTIN**  
 EC10431401      4015120431401



### Product description

- ELC control unit (ELC=ESYLUX Light Control) with integrated constant lighting control for superb energy efficiency
- Plug-and-play connection of up to 4 ELC lights
- Two push button inputs for conventional buttons (230 V)
- Optional 8-button keypad (accessory) for manual override
- Manual override and call-up of scenes in four separate light channels
- Fast plug-and-play connection of lights via RJ45 plug-in connections
- Can be easily networked with additional ELC control units via the plug-in connection
- Basic system designed for a luminaire connection (RJ45) of 3 m
- Expansion possible with DALI lights via integrated DALI bus outputs
- Presence-dependent HVAC switching using a DALI switch actuator (DALI switch), available separately

### Technical data

| GENERAL                         |   |
|---------------------------------|---|
| Device category                 | Control   |
| Product information             | ELC lighting systems combine compatible components via plug-and-play: ELC main lighting, control unit and sensor system. Alternatively: The ELC lights are also suitable for plug-and-play installation outside ELC lighting systems if suitable driver sets (accessories) are used |
| User interface                  | IR remote control, Push button input  |
| Remote controllable             | ✓   |
| Conformity                      | CE, EAC, RoHS, WEEE   |
| Warranty                        | 5 years   |
| ATTACHMENT                      |   |
| Installation type               | Recessed mounting   |
| Installation position           | Ceiling   |
| Installation dimension          | Installation length: 575 mm x Installation width: 285 mm x Installation depth: 125 mm   |
| Type of connection              | Push terminal   |
| Connectable wire cross section  | 0.75 – 2.5 mm <sup>2</sup>  |
| HOUSING                         |   |
| Dimensions                      | Length 555 mm x Width 262 mm x Height/Depth 85 mm   |
| Weight                          | 2758 g  |
| Material                        | Steel, galvanised   |
| Protection type                 | IP20  |
| Permissible ambient temperature | 0 °C...+40 °C   |

|                   |                          |
|-------------------|--------------------------|
| Relative humidity | 5 – 93 %, non-condensing |
| Colour            | white                    |

### ELECTRICAL VERSION

|                      |                                  |
|----------------------|----------------------------------|
| Control system       | ELC (ESYLUX Light Control), DALI |
| Protection class     | I                                |
| Nominal voltage      | 230 V ~ / 50 – 60 Hz             |
| Output voltage       | 48 – 48 V DC                     |
| Output current       | 2800 mA                          |
| Power consumption    | 133 W                            |
| Stand-by consumption | < 0.5 W                          |

### CHANNELS (LIGHTING / HVAC)

|                                    |  |
|------------------------------------|--|
| Number of light channels           | 4  |
| Number of control units per group  | 20   |
| Number of light groups             | 10   |
| Push button input lighting         | 2  |
| Number of HVAC-channels            | 2  |
| Number of scenes                   | 4  |
| Orientation light                  | disabled/10 – 50 %, 2 values can be selected |
| Constant light control             | ✓  |
| Orientation light duration or time | ✓  |
| HCL-lighting control               | –  |
| Number of outputs luminaires ELC   | 4  |
| Number of outputs luminaires DALI  | 2  |

## SMARTDRIVER-2 IR 4C+2 x4 ELC

|                    |               |
|--------------------|---------------|
| <b>Item number</b> | <b>GTIN</b>   |
| EC10431401         | 4015120431401 |

### Factory settings

| GENERAL                                    |        | Luminous efficiency switch-on value      |                 |
|--|--------|--|-----------------|
| Sensitivity                                | 100 %  |  | 50 %            |
| Afterglow luminous efficiency              | 10 %   | <b>CHANNELS (LIGHTING / HVAC)</b>        |                 |
| Afterglow duration                         | 5 min  | Channel                                  | C1 Lighting     |
| Orientation light ON                       | –      | Operating mode                           | fully automatic |
| Orientation light, depending on brightness | ✓      | Level of brightness/switching threshold  | 500 lx          |
| Switching threshold for orientation light  | 500 lx | Switch-off delay time                    | 5 min           |
| Deviation (%)                              | 0 %    | Luminous efficiency of orientation light | 10 %            |
|  |        | Duration of switch-off warning           | 60 s            |

### System components

| Product designation                       | Item number | Product description  | GTIN          |
|---|-------------|--|---------------|
| <b>Cable</b>                              |             |  |               |
| CABLE RJ10-OPEN END 10m WH                | EC10431517  | Connection cable RJ10 Open end, 10 m   | 4015120431517 |
| CABLE RJ10 10m WH                         | EC10431500  | Connection cable RJ10, 10 m  | 4015120431500 |
| CABLE RJ11 10m WH                         | EC10431524  | Connection cable RJ11, 10 m, white   | 4015120431524 |
| CABLE RJ45 3m WH                          | EC10431531  | Connection cable RJ45, 3 m, white  | 4015120431531 |
| CABLE RJ45 5m WH                          | EC10430695  | Connection cable RJ45, 5 m, white  | 4015120430695 |
| CABLE RJ45 10m WH                         | EC10430749  | Connection cable RJ45, 10 m, white   | 4015120430749 |
| CABLE-SET RJ45 5m x4                      | EC10431142  | Connection cable set for SMARTDRIVER x4 series   | 4015120431142 |
| CABLE-SET RJ45 10m x4                     | EC10431159  | Connection cable set for SMARTDRIVER x4 series   | 4015120431159 |
| <b>Ceiling-mounted presence detector</b>  |             |  |               |
| PD-C 360i/8 ELC                           | EP10427602  | Presence detector with 360° field of detection for ceiling mounting                          | 4015120427602 |
| PD-C 360i/24 ELC                          | EP10427619  | Presence detector with 360° field of detection for ceiling mounting                          | 4015120427619 |
| PD 360i/8 BASIC ELC                       | EB10431357  | Presence detector for ESYLUX Light Control with 360° field of detection for ceiling mounting | 4015120431357 |
| <b>Push button</b>                        |             |  |               |
| PUSH BUTTON x8 ELC                        | EC10430923  | DALI 8-way push button   | 4015120430923 |
| <b>Recessed light</b>                     |             |  |               |
| CELINE-2 PNL 600 DDP OP 3600 830 IP20 ELC | EQ10132308  | LED light with opal cover (diffuser)   | 4015120132308 |
| CELINE-2 PNL 600 DDP TR 4000 830 IP20 ELC | EQ10132339  | LED light with prismatic cover (diffuser)  | 4015120132339 |
| CELINE-2 PNL 625 DDP OP 3600 830 IP20 ELC | EQ10132360  | LED light with opal cover (diffuser)   | 4015120132360 |
| CELINE-2 PNL 625 DDP TR 4000 830 IP20 ELC | EQ10132391  | LED light with prismatic cover (diffuser)  | 4015120132391 |
| CELINE-2 PNL 600 DDP OP 4000 840 IP20 ELC | EQ10132315  | LED light with opal cover (diffuser)   | 4015120132315 |
| CELINE-2 PNL 600 DDP TR 4400 840 IP20 ELC | EQ10132346  | LED light with prismatic cover (diffuser)  | 4015120132346 |
| CELINE-2 PNL 625 DDP OP 4000 840 IP20 ELC | EQ10132377  | LED light with opal cover (diffuser)   | 4015120132377 |
| CELINE-2 PNL 625 DDP TR 4400 840 IP20 ELC | EQ10132407  | LED light with prismatic cover (diffuser)  | 4015120132407 |

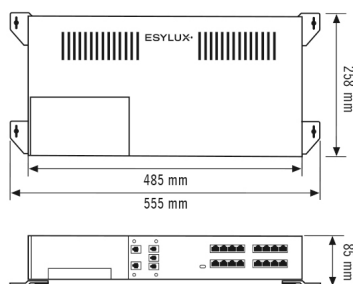
## SMARTDRIVER-2 IR 4C+2 x4 ELC

| Item number | GTIN          |
|-------------|---------------|
| EC10431401  | 4015120431401 |

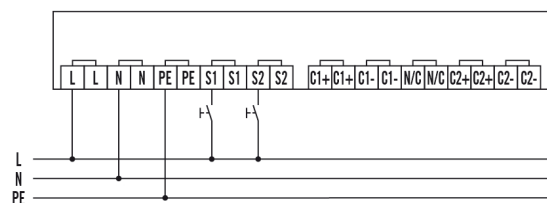
### Accessories

| Product designation                      | Item number | Product description  | GTIN          |
|--|-------------|--|---------------|
| <b>Cable</b>                             |             |  |               |
| CABLE-SET RJ45 5m x8                     | EC10431227  | Connection cable set for SMARTDRIVER x8 series   | 4015120431227 |
| CABLE-SET RJ45 10m x8                    | EC10431234  | Connection cable set for SMARTDRIVER x8 series   | 4015120431234 |
| CABLE RJ45 5m WH                         | EC10430695  | Connection cable RJ45, 5 m, white  | 4015120430695 |
| CABLE RJ45 10m WH                        | EC10430749  | Connection cable RJ45, 10 m, white   | 4015120430749 |
| CABLE RJ10 10m WH                        | EC10431500  | Connection cable RJ10, 10 m  | 4015120431500 |
| CABLE RJ10-OPEN END 10m WH               | EC10431517  | Connection cable RJ10 Open end, 10 m   | 4015120431517 |
| CABLE RJ11 10m WH                        | EC10431524  | Connection cable RJ11, 10 m, white   | 4015120431524 |
| CABLE-SET RJ45 5m x4                     | EC10431142  | Connection cable set for SMARTDRIVER x4 series   | 4015120431142 |
| CABLE-SET RJ45 10m x4                    | EC10431159  | Connection cable set for SMARTDRIVER x4 series   | 4015120431159 |
| CABLE RJ45 3m WH                         | EC10431531  | Connection cable RJ45, 3 m, white  | 4015120431531 |
| CABLE-SET-2 RJ45 5m x4                   | EC10431906  | Connection cable set for SMARTDRIVER x4 series   | 4015120431906 |
| CABLE-SET-2 RJ45 10m x4                  | EC10431913  | Connection cable set for SMARTDRIVER x4 series   | 4015120431913 |
| <b>Ceiling-mounted presence detector</b> |             |  |               |
| PD-C 360i/8 ELC                          | EP10427602  | Presence detector with 360° field of detection for ceiling mounting  | 4015120427602 |
| PD-C 360i/24 ELC                         | EP10427619  | Presence detector with 360° field of detection for ceiling mounting  | 4015120427619 |
| PD 360i/8 BASIC ELC                      | EB10431357  | Presence detector for ESYLUX Light Control with 360° field of detection for ceiling mounting   | 4015120431357 |
| <b>Electrical accessories</b>            |             |  |               |
| ACTUATOR FULL AUTO C3 DALI               | EP10427473  | Modul for the conversion of bus commands from the DALI presence detector and other light controls into switching signals (fully automatic) | 4015120427473 |
| ACTUATOR SEMI AUTO C4 DALI               | EP10427480  | Modul for the conversion of bus commands from the DALI presence detector and other light controls into switching signals (semi-automatic)  | 4015120427480 |
| <b>Push button</b>                       |             |  |               |
| PUSH BUTTON x8 ELC                       | EC10430923  | DALI 8-way push button   | 4015120430923 |

### Dimension drawing



### Circuit diagram



Standard operation.

## SMARTDRIVER-2 IR 4C+2 x4 ELC

| Item number | GTIN          |
|-------------|---------------|
| EC10431401  | 4015120431401 |

### Detailed product description

---

- ELC control unit (ELC=ESYLUX Light Control) with integrated constant lighting control for superb energy efficiency
- Plug-and-play connection of up to 4 ELC lights
- Two push button inputs for conventional buttons (230 V)
- Optional 8-button keypad (accessory) for manual override
- Manual override and call-up of scenes in four separate light channels
- Fast plug-and-play connection of lights via RJ45 plug-in connections
- Can be easily networked with additional ELC control units via the plug-in connection
- Basic system designed for a luminaire connection (RJ45) of 3 m
- Expansion possible with DALI lights via integrated DALI bus outputs
- Presence-dependent HVAC switching using a DALI switch actuator (DALI switch), available separately