

## SMARTDRIVER-2 IR 4C+2 x8 ELC

**Item number**      **GTIN**  
 EC10431425      4015120431425



### Product description

- ELC control unit (ELC=ESYLUX Light Control) with integrated constant lighting control for superb energy efficiency
- Plug-and-play connection of up to 8 ELC lights
- Two push button inputs for conventional buttons (230 V)
- Optional 8-button keypad (accessory) for manual override
- Manual override and call-up of scenes in four separate light channels
- Fast plug-and-play connection of lights via RJ45 plug-in connections
- Can be easily networked with additional ELC control units via the plug-in connection
- Basic system designed for a luminaire connection (RJ45) of 3 m
- Expansion possible with DALI lights via integrated DALI bus outputs
- Presence-dependent HVAC switching using a DALI switch actuator (DALI switch), available separately

### Technical data

GENERAL	
Device category	Control
Product information	ELC lighting systems combine compatible components via plug-and-play: ELC main lighting, control unit and sensor system. Alternatively: The ELC lights are also suitable for plug-and-play installation outside ELC lighting systems if suitable driver sets (accessories) are used
User interface	IR remote control, Push button input
Remote controllable	✓
Conformity	CE, EAC, RoHS, WEEE
Warranty	5 years
ATTACHMENT	
Installation type	Recessed mounting
Installation position	Ceiling
Installation dimension	Installation length: 575 mm x Installation width: 285 mm x Installation depth: 125 mm
Type of connection	Push terminal
Connectable wire cross section	0.75 – 2.5 mm <sup>2</sup>
HOUSING	
Dimensions	Length 555 mm x Width 262 mm x Height/Depth 85 mm
Weight	3308 g
Material	Steel, galvanised
Protection type	IP20
Permissible ambient temperature	0 °C...+40 °C

Relative humidity	5 – 93 %, non-condensing
Colour	white

### ELECTRICAL VERSION

Control system	ELC (ESYLUX Light Control), DALI
Protection class	I
Nominal voltage	230 V ~ / 50 – 60 Hz
Output voltage	48 – 48 V DC
Output current	5600 mA
Power consumption	260 W
Stand-by consumption	< 0.5 W

### CHANNELS (LIGHTING / HVAC)

Number of light channels	4
Number of control units per group	10
Number of light groups	10
Push button input lighting	2
Number of HVAC-channels	2
Number of scenes	4
Orientation light	disabled/10 – 50 %, 2 values can be selected
Constant light control	✓
Orientation light duration or time	✓
HCL-lighting control	–
Number of outputs luminaires ELC	8
Number of outputs luminaires DALI	2

## SMARTDRIVER-2 IR 4C+2 x8 ELC

<b>Item number</b>	<b>GTIN</b>
EC10431425	4015120431425

### Factory settings

GENERAL		Luminous efficiency switch-on value	50 %
Sensitivity	100 %		
Afterglow luminous efficiency	10 %		
Afterglow duration	5 min		
Orientation light ON	–		
Orientation light, depending on brightness	✓		
Switching threshold for orientation light	500 lx		
Deviation (%)	0 %		
		CHANNELS (LIGHTING / HVAC)	
Channel		C1	Lighting
Operating mode		fully	automatic
Level of brightness/switching threshold		500	lx
Switch-off delay time		5	min
Luminous efficiency of orientation light		10	%
Duration of switch-off warning		60	s

### System components

Product designation	Item number	Product description	GTIN
<b>Cable</b>			
CABLE RJ10 10m WH	EC10431500	Connection cable RJ10, 10 m	4015120431500
CABLE RJ10-OPEN END 10m WH	EC10431517	Connection cable RJ10 Open end, 10 m	4015120431517
CABLE RJ11 10m WH	EC10431524	Connection cable RJ11, 10 m, white	4015120431524
CABLE RJ45 3m WH	EC10431531	Connection cable RJ45, 3 m, white	4015120431531
CABLE RJ45 5m WH	EC10430695	Connection cable RJ45, 5 m, white	4015120430695
CABLE RJ45 10m WH	EC10430749	Connection cable RJ45, 10 m, white	4015120430749
CABLE-SET RJ45 5m x8	EC10431227	Connection cable set for SMARTDRIVER x8 series	4015120431227
CABLE-SET RJ45 10m x8	EC10431234	Connection cable set for SMARTDRIVER x8 series	4015120431234
<b>Ceiling-mounted presence detector</b>			
PD-C 360i/8 ELC	EP10427602	Presence detector with 360° field of detection for ceiling mounting	4015120427602
PD-C 360i/24 ELC	EP10427619	Presence detector with 360° field of detection for ceiling mounting	4015120427619
PD 360i/8 BASIC ELC	EB10431357	Presence detector for ESYLUX Light Control with 360° field of detection for ceiling mounting	4015120431357
<b>Push button</b>			
PUSH BUTTON x8 ELC	EC10430923	DALI 8-way push button	4015120430923
<b>Recessed light</b>			
CELINE-2 PNL 600 DDP OP 3600 830 IP20 ELC	EQ10132308	LED light with opal cover (diffuser)	4015120132308
CELINE-2 PNL 600 DDP TR 4000 830 IP20 ELC	EQ10132339	LED light with prismatic cover (diffuser)	4015120132339
CELINE-2 PNL 625 DDP OP 3600 830 IP20 ELC	EQ10132360	LED light with opal cover (diffuser)	4015120132360
CELINE-2 PNL 625 DDP TR 4000 830 IP20 ELC	EQ10132391	LED light with prismatic cover (diffuser)	4015120132391
CELINE-2 PNL 600 DDP OP 4000 840 IP20 ELC	EQ10132315	LED light with opal cover (diffuser)	4015120132315
CELINE-2 PNL 600 DDP TR 4400 840 IP20 ELC	EQ10132346	LED light with prismatic cover (diffuser)	4015120132346
CELINE-2 PNL 625 DDP OP 4000 840 IP20 ELC	EQ10132377	LED light with opal cover (diffuser)	4015120132377
CELINE-2 PNL 625 DDP TR 4400 840 IP20 ELC	EQ10132407	LED light with prismatic cover (diffuser)	4015120132407

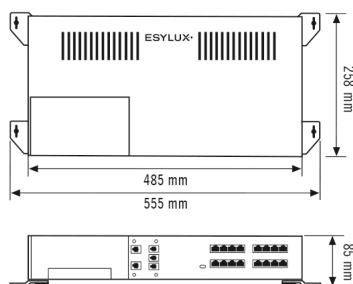
## SMARTDRIVER-2 IR 4C+2 x8 ELC

Item number	GTIN
EC10431425	4015120431425

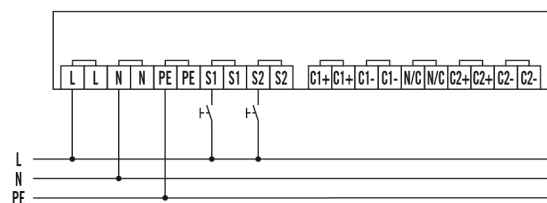
### Accessories

Product designation	Item number	Product description	GTIN
<b>Cable</b>			
CABLE-SET RJ45 5m x8	EC10431227	Connection cable set for SMARTDRIVER x8 series	4015120431227
CABLE-SET RJ45 10m x8	EC10431234	Connection cable set for SMARTDRIVER x8 series	4015120431234
CABLE RJ45 5m WH	EC10430695	Connection cable RJ45, 5 m, white	4015120430695
CABLE RJ45 10m WH	EC10430749	Connection cable RJ45, 10 m, white	4015120430749
CABLE RJ10 10m WH	EC10431500	Connection cable RJ10, 10 m	4015120431500
CABLE RJ10-OPEN END 10m WH	EC10431517	Connection cable RJ10 Open end, 10 m	4015120431517
CABLE RJ11 10m WH	EC10431524	Connection cable RJ11, 10 m, white	4015120431524
CABLE-SET RJ45 5m x4	EC10431142	Connection cable set for SMARTDRIVER x4 series	4015120431142
CABLE-SET RJ45 10m x4	EC10431159	Connection cable set for SMARTDRIVER x4 series	4015120431159
CABLE RJ45 3m WH	EC10431531	Connection cable RJ45, 3 m, white	4015120431531
CABLE-SET-2 RJ45 5m x8	EC10431920	Connection cable set for SMARTDRIVER x8 series	4015120431920
CABLE-SET-2 RJ45 10m x8	EC10431937	Connection cable set for SMARTDRIVER x8 series	4015120431937
<b>Ceiling-mounted presence detector</b>			
PD-C 360i/8 ELC	EP10427602	Presence detector with 360° field of detection for ceiling mounting	4015120427602
PD-C 360i/24 ELC	EP10427619	Presence detector with 360° field of detection for ceiling mounting	4015120427619
PD 360i/8 BASIC ELC	EB10431357	Presence detector for ESYLUX Light Control with 360° field of detection for ceiling mounting	4015120431357
<b>Electrical accessories</b>			
ACTUATOR FULL AUTO C3 DALI	EP10427473	Modul for the conversion of bus commands from the DALI presence detector and other light controls into switching signals (fully automatic)	4015120427473
ACTUATOR SEMI AUTO C4 DALI	EP10427480	Modul for the conversion of bus commands from the DALI presence detector and other light controls into switching signals (semi-automatic)	4015120427480
<b>Push button</b>			
PUSH BUTTON x8 ELC	EC10430923	DALI 8-way push button	4015120430923

### Dimension drawing



### Circuit diagram



Standard operation.

## SMARTDRIVER-2 IR 4C+2 x8 ELC

Item number	GTIN
EC10431425	4015120431425

### Detailed product description

---

- ELC control unit (ELC=ESYLUX Light Control) with integrated constant lighting control for superb energy efficiency
- Plug-and-play connection of up to 8 ELC lights
- Two push button inputs for conventional buttons (230 V)
- Optional 8-button keypad (accessory) for manual override
- Manual override and call-up of scenes in four separate light channels
- Fast plug-and-play connection of lights via RJ45 plug-in connections
- Can be easily networked with additional ELC control units via the plug-in connection
- Basic system designed for a luminaire connection (RJ45) of 3 m
- Expansion possible with DALI lights via integrated DALI bus outputs
- Presence-dependent HVAC switching using a DALI switch actuator (DALI switch), available separately