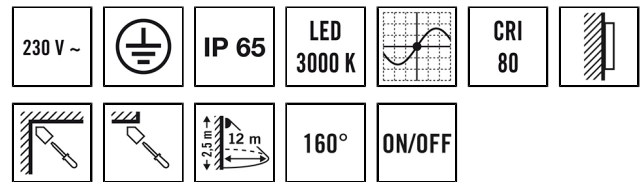
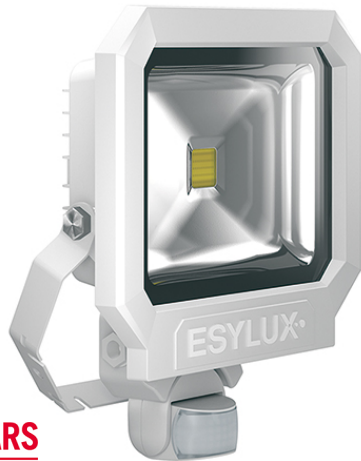


DATA SHEET

ESYLUX

SUN AFL TR 5400 830 MD WH

Item number EL10810220
GTIN 4015120810220



Product description

- LED floodlight with high-grade die-cast aluminium housing and integrated motion detector with 160° field of detection for convenient lighting control
- 50 W LED luminous efficiency corresponds to 215 W light bulb, light colour approx. 3000 K white
- High light yield of 112 lm/W, excellent colour rendering index Ra 80

Offers special product features like:

- Integrated motion detector
- Overvoltage protection up to 2.5 kV

Technical data

GENERAL	
Device category	Floodlights
Product information	The floodlights are intended for use outdoors. If used inside (e. g. below the ceiling) the heat cannot be sufficiently discharged where necessary.
User interface	Adjusting controller
Remote controllable	–
Conformity	CE, EAC, RoHS, WEEE
Warranty	3-year
ATTACHMENT	
Installation type	Surface mounting
Installation position	Wall
Type of connection	Screw terminal
Connectable wire cross section	1.50 – 2.50 mm ²
Number of contacts	3
HOUSING	
Dimensions	Length 290 mm x Width 250 mm x Height/Depth 86 mm
Weight	1988 g
Material	Die-cast aluminium and UV-stabilised plastic
Protection type	IP65
Permissible ambient temperature	-25 °C...+40 °C
Impact resistance	IK08
Colour	white, similar to RAL 9016

ELECTRICAL VERSION	
Control system	ON/OFF
Protection class	I
Nominal voltage	230 V ~ / 50 Hz
In-rush current	2.6 A / 322 µs
Leakage current	0.232 mA
Stand-by consumption	0.5 W

LIGHT	
Diffuser	transparent
Light emission	direct
Beam angle	110 °
Flicker factor	<20 %
Rated output P	48 W
Luminous flux	5400 lm
Luminous efficacy	112 lm/W
Colour temperature	3100 K
Colour rendering index Ra	> 80
Colour tolerance	3 SDCM
L70B10 lifetime at 25 °C	40000 h
Lebensdauer L70B50 bei 25 °C	40000 h
Lebensdauer L80B10 bei 25 °C	25000 h
Life time L80B50 at 25 °C	25000 h
Lebensdauer L90B10 bei 25 °C	15000 h
Life time L90B50 at 25 °C	15000 h

SENSORS	
Detection angle	160°
Detection range diagonally	12 m

DATA SHEET

SUN AFL TR 5400 830 MD WH

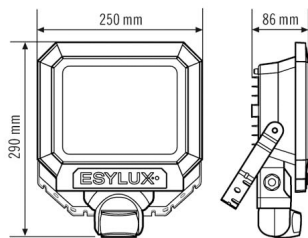
Item number	GTIN
EL10810220	4015120810220

Range adjustment	mechanically with included cut to size lens mask	Max. mounting height	4 m
Field of detection	201 m ²	Level of brightness	3 - 1000 lx
Recommended installation height	2.5 m	Switch-off delay time	10 s...15 min (adjustable in steps)

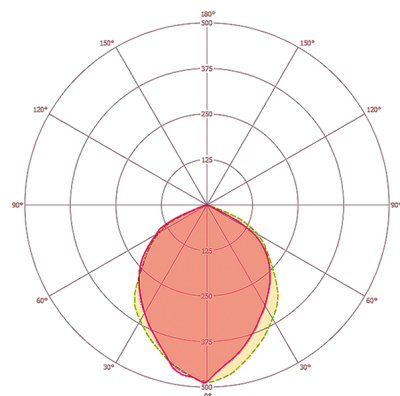
Accessories

Product designation	Item number	Product description	GTIN
Mounting			
FL WALL ARM 700 WH	EL10810527	Wall arm for floodlight, 700 mm, including adapter, white	4015120810527
FL GROUND SPIKE WH	EL10810541	Wall arm for floodlight, including adapter, white	4015120810541

Dimension drawing



Light distribution



Field of detections

Detection range

	■ Diagonally (A)	12 m