

# DATA SHEET

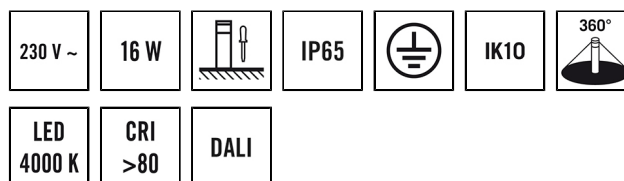
## ALVA BL 940/170 TR 360° 1200 840 DALI AN

### Item number

EL10820229

### GTIN

4015120820229



### Product description

- LED DALI bollard light made from high-grade aluminium
- Dirt-repellent thanks to powder coating with lotus effect
- Integrated ballast (DALI), installation without further accessories
- High-quality housing, die-cast aluminium, charcoal grey powder-coated, similar to RAL 7024
- Colour temperature 4000 K

### Offers special product features like:

- Protected against sea air

### Technical data

#### GENERAL

Device category	Bollard light
Included in delivery	3x screw, 3x wall plugs
User interface	DALI-Bus
Remote controllable	–
Conformity	CE, EAC, RoHS, WEEE
Product-specific information	Meets DALI-2 standard
Warranty	5 years

#### ATTACHMENT

Installation type	Free standing
Installation position	Floor
Type of connection	Push terminal
Connectable wire cross section	0.75 – 2.5 mm <sup>2</sup>
Number of contacts	5

#### HOUSING

Dimensions	Height/Depth 940 mm, Ø 170 mm
Weight	7640 g
Material	powder-coated aluminium
Protection type	IP65
Permissible ambient temperature	-25 °C...+40 °C
Relative humidity	5 – 95 %, non-condensing
Impact resistance	IK10
Colour	graphite grey, similar to RAL 7024

#### ELECTRICAL VERSION

Control system	DALI
Protection class	I
Nominal voltage	200 – 240 V ~ / 50 – 60 Hz
In-rush current	12 A / 57 µs
Leakage current	0.31 mA
Power consumption	70 mA

#### LIGHT

Diffuser	transparent
Light emission	direct
Beam angle	159 °
Flicker factor	<3 %
Rated output P	17 W
Luminous flux	1350 lm
Luminous efficacy	79 lm/W
Colour temperature	4100 K
Colour rendering index Ra	> 80
Colour tolerance	1 SDCM
Color Quality Scale	80
L70B10 lifetime at 25 °C	105000 h
Life time L70B50 at 25 °C	110000 h
Life time L80B10 at 25 °C	65000 h
Life time L80B50 at 25 °C	70000 h
Life time L90B10 at 25 °C	35000 h
Life time L90B50 at 25 °C	35000 h
Photobiological safety	RGO

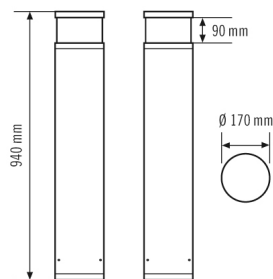
## ALVA BL 940/170 TR 360° 1200 840 DALI AN

<b>Item number</b>	<b>GTIN</b>
EL10820229	4015120820229

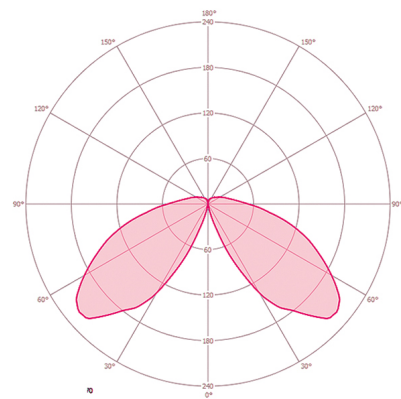
### Accessories

Product designation	Item number	Product description	GTIN
<b>Mounting</b>			
ALVA GROUND SPIKE 170	EL10820199	Ground anchor galvanised for installation of bollard lights in concrete foundation or solid ground	4015120820199

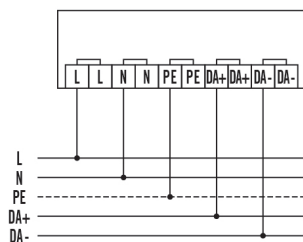
### Dimension drawing



### Light distribution



### Circuit diagram



Standard operation.

### Detailed product description

- LED DALI bollard light made from high-grade aluminium
- Dirt-repellent thanks to powder coating with lotus effect
- Lamp head: crystal clear with no-glare light emission
- Light distribution: 360°
- Integrated ballast (DALI), installation without further accessories
- DALI interface for 2-pin DALI control cable
- High-quality housing, die-cast aluminium, charcoal grey powder-coated, similar to RAL 7024
- Installation type: mounting plate for screwing on to a base, optionally via a ground anchor (accessories)
- Colour temperature 4000 K