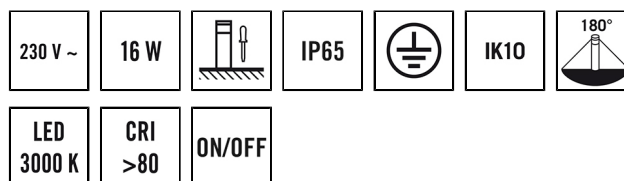


# DATA SHEET

## ALVA BL 540/170 TR 180° 600 830 AN

**Item number** EL10820687  
**GTIN** 4015120820687



### Product description

- LED bollard made from high-grade aluminium
- Dirt-repellent thanks to powder coating with lotus effect
- Integrated ballast , installation without further accessories
- High-quality housing, die-cast aluminium, charcoal grey powder-coated, similar to RAL 7024
- Colour temperature 3000 K

### Offers special product features like:

- Protected against sea air



### Technical data

GENERAL	
Device category	Bollard light
Included in delivery	3x screw, 3x wall plugs
Remote controllable	–
Conformity	CE, EAC, RoHS, WEEE
Warranty	5 years

ATTACHMENT	
Installation type	Free standing
Installation position	Floor
Type of connection	Push terminal
Connectable wire cross section	0.75 – 2.5 mm <sup>2</sup>
Number of contacts	3

HOUSING	
Dimensions	Height/Depth 540 mm, Ø 170 mm
Weight	8925 g
Material	powder-coated aluminium
Protection type	IP65
Permissible ambient temperature	-25 °C...+40 °C
Relative humidity	5 – 95 %, non-condensing
Impact resistance	IK10
Colour	graphite grey, similar to RAL 7024

ELECTRICAL VERSION	
Control system	ON/OFF

Protection class	I
Nominal voltage	110 – 240 V ~ / 50 – 60 Hz
In-rush current	13 A / 57 µs
Leakage current	0.31 mA
Power consumption	65 mA

LIGHT	
Diffuser	transparent
Light emission	direct
Beam angle	159 °
Flicker factor	<3 %
Rated output P	16 W
Luminous flux	760 lm
Luminous efficacy	47 lm/W
Colour temperature	3100 K
Colour rendering index Ra	> 80
Colour tolerance	2 SDCM
Color Quality Scale	80
L70B10 lifetime at 25 °C	105000 h
Life time L70B50 at 25 °C	110000 h
Life time L80B10 at 25 °C	65000 h
Life time L80B50 at 25 °C	70000 h
Life time L90B10 at 25 °C	35000 h
Life time L90B50 at 25 °C	35000 h
Photobiological safety	RG0

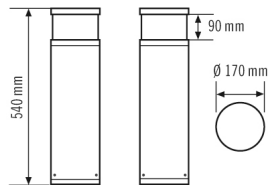
## ALVA BL 540/170 TR 180° 600 830 AN

**Item number**      **GTIN**  
 EL10820687      4015120820687

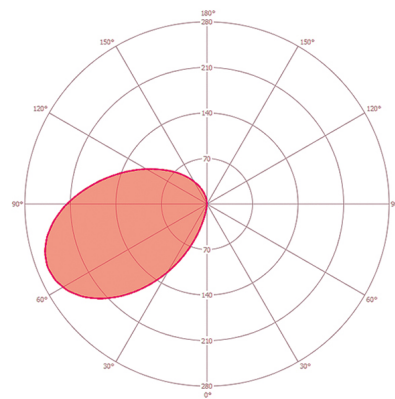
### Accessories

Product designation	Item number	Product description	GTIN
<b>Mounting</b>			
ALVA GROUND SPIKE 170	EL10820199	Ground anchor galvanised for installation of bollard lights in concrete foundation or solid ground	4015120820199

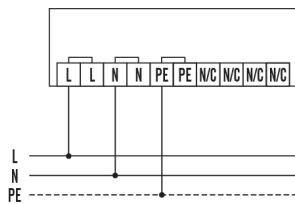
### Dimension drawing



### Light distribution



### Circuit diagram



Standard operation.

### Detailed product description

- LED bollard made from high-grade aluminium
- Dirt-repellent thanks to powder coating with lotus effect
- Lamp head: crystal clear with no-glare light emission
- Light distribution: 180°
- Integrated ballast , installation without further accessories
- High-quality housing, die-cast aluminium, charcoal grey powder-coated, similar to RAL 7024
- Installation type: Mounting plate for screwing on to a base, optionally via a ground anchor (accessories)
- Colour temperature 3000 K