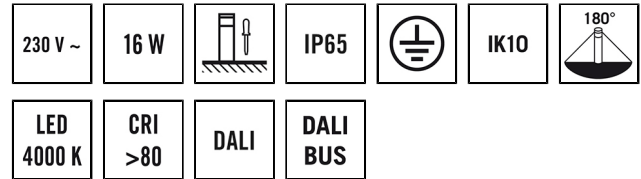


DATA SHEET

ALVA BL 940/170 OP 180° 600 840 DALI AN

Item number EL10820823
GTIN 4015120820823



Product description

- LED DALI bollard light made from high-grade aluminium
- Dirt-repellent thanks to powder coating with lotus effect
- Integrated ballast (DALI), installation without further accessories
- High-quality housing, die-cast aluminium, charcoal grey powder-coated, similar to RAL 7024
- Colour temperature 4000 K

Offers special product features like:

- Protected against sea air

Technical data

GENERAL	
Device category	Bollard light
Included in delivery	3x screw, 3x wall plugs
User interface	DALI-Bus
Remote controllable	–
Conformity	CE, EAC, RoHS, WEEE
Product-specific information	Meets DALI-2 standard
Warranty	5 years
ATTACHMENT	
Installation type	Free standing
Installation position	Floor
Type of connection	Push terminal
Connectable wire cross section	0.75 – 2.5 mm ²
Number of contacts	5
HOUSING	
Dimensions	Height/Depth 940 mm, Ø 170 mm
Weight	7957 g
Material	powder-coated aluminium
Protection type	IP65
Permissible ambient temperature	-25 °C...+40 °C
Relative humidity	5 – 95 %, non-condensing
Impact resistance	IK10
Colour	graphite grey, similar to RAL 7024

ELECTRICAL VERSION	
Control system	DALI
Protection class	I
Nominal voltage	200 – 240 V ~ / 50 – 60 Hz
In-rush current	12 A / 57 µs
Leakage current	0.31 mA
Power consumption	70 mA

LIGHT	
Diffuser	opal
Light emission	direct
Beam angle	283 °
Flicker factor	<3 %
Rated output P	17 W
Luminous flux	630 lm
Luminous efficacy	37 lm/W
Colour temperature	4100 K
Colour rendering index Ra	> 80
Colour tolerance	1 SDCM
Color Quality Scale	80
L70B10 lifetime at 25 °C	105000 h
Life time L70B50 at 25 °C	110000 h
Life time L80B10 at 25 °C	65000 h
Life time L80B50 at 25 °C	70000 h
Life time L90B10 at 25 °C	35000 h
Life time L90B50 at 25 °C	35000 h
Photobiological safety	RG0

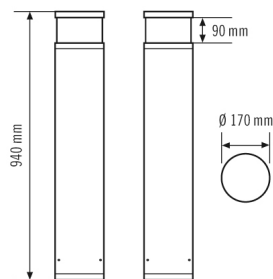
ALVA BL 940/170 OP 180° 600 840 DALI AN

Item number	GTIN
EL10820823	4015120820823

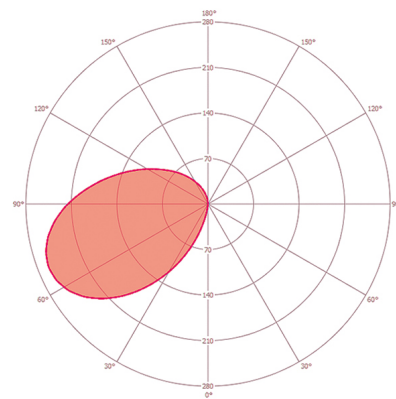
Accessories

Product designation	Item number	Product description	GTIN
Mounting			
ALVA GROUND SPIKE 170	EL10820199	Ground anchor galvanised for installation of bollard lights in concrete foundation or solid ground	4015120820199

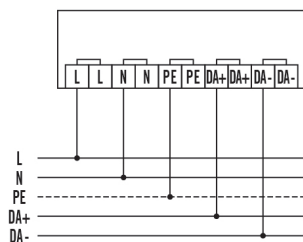
Dimension drawing



Light distribution



Circuit diagram



Standard operation.

Detailed product description

- LED DALI bollard light made from high-grade aluminium
- Dirt-repellent thanks to powder coating with lotus effect
- Lamp head: opal satin
- Light distribution: 180°
- Integrated ballast (DALI), installation without further accessories
- DALI interface for 2-pin DALI control cable
- High-quality housing, die-cast aluminium, charcoal grey powder-coated, similar to RAL 7024
- Installation type: Mounting plate for screwing on to a base, optionally via a ground anchor (accessories)
- Colour temperature 4000 K