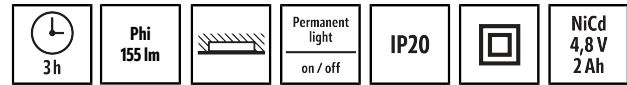


ELH EL LED 3h SC RM CORRIDOR

Item number EN10080012
GTIN 4015120080012



Product description

- Single-battery 3-h emergency light for **Recessed ceiling mounting** Optionally, operation in continuous or stand-by mode possible
- Downwards light emission and optimised for illumination of **corridors** Test results indicated by coloured LEDs (green/red)
- Self-monitoring and optional controllable remote shutdown, as well as **Status readout function via DALI bus**



Technical data

GENERAL

Device category	Safety light
User interface	DALI-Bus
Remote controllable	-
Conformity	CE, EAC, RoHS, WEEE
Warranty	5 years

ATTACHMENT

Installation type	Recessed mounting
Installation position	Ceiling
Installation dimension	Installation depth: 45 mm, Ø 43 mm
Type of connection	Push terminal
Connectable wire cross section	1.5 - 2.5 mm ²
Number of contacts	6

HOUSING

Dimensions	Height/Depth 45 mm, Ø 55 mm
Weight	390 g
Material	UV-stabilised polycarbonate
Protection type	IP20
Permissible ambient temperature	5 °C...+35 °C
Relative humidity	5 - 95 %, non-condensing
Colour	white, similar to RAL 9016

ELECTRICAL VERSION

Control system	DALI
Protection class	II
Nominal voltage	230 V ~ / 50 Hz
In-rush current	1.3 A / 505 µs
Leakage current	0.019 mA

LIGHT

Light emission	direct
Rated output P	4 W
Luminous flux	155 lm
Luminous efficacy	38 lm/W
Colour temperature	approx. 4500 K
Colour rendering index Ra	> 75

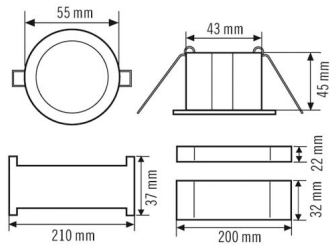
EMERGENCY LIGHTING

Light duration	3 h
Switching type	Continuous mode/standby mode
Power feed	Decentralised (single-battery)
Battery	NiCd 4,8 V / 2 Ah
Status display	by LED
Automatic testing	✓

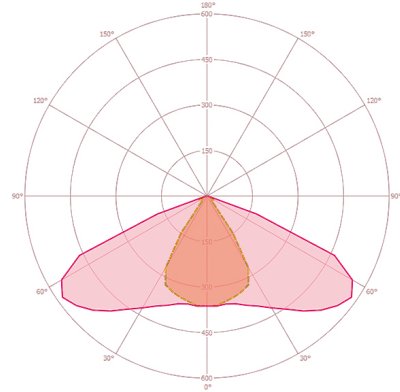
ELH EL LED 3h SC RM CORRIDOR

Item number **GTIN**
EN10080012 4015120080012

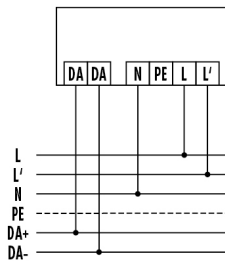
Dimension drawing



Light distribution



Circuit diagram



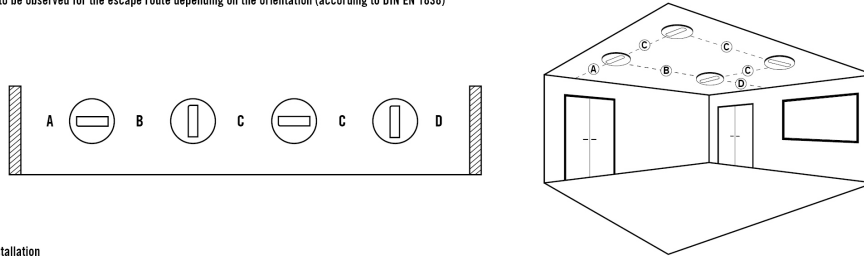
Standard operation.

ELH EL LED 3h SC RM CORRIDOR

Item number **GTIN**
 EN10080012 4015120080012

Planning aids

Distances to be observed for the escape route depending on the orientation (according to DIN EN 1838)



Ceiling installation

Emergency light type **ELH 0 LED SC**

Installation height	For 1 Lux					For 0,5 Lux				
	A	B	C	D	E	A	B	C	D	E
2 m	3,1 m	6,6 m	6,7 m	6,7 m	3,1 m	3,2 m	6,8 m	6,9 m	7,1 m	3,4 m
2,5 m	3,6 m	8,0 m	8,0 m	8,0 m	3,6 m	3,9 m	8,3 m	8,4 m	8,5 m	3,9 m
3 m	4,2 m	9,2 m	8,2 m	9,2 m	4,0 m	4,5 m	9,8 m	9,8 m	9,9 m	4,5 m
3,5 m	4,4 m	10,4 m	10,3 m	10,2 m	4,4 m	5,0 m	11,1 m	11,1 m	11,2 m	5,0 m
4 m	4,6 m	11,4 m	11,2 m	11,1 m	4,4 m	5,6 m	12,4 m	12,4 m	12,4 m	5,6 m

Emergency light type **ELH C LED SC**

Installation height	For 1 Lux					For 0,5 Lux				
	A	B	C	D	E	A	B	C	D	E
2 m	4,5 m	10,2 m	9,2 m	3,7 m	1,7 m	5,0 m	11,1 m	10,3 m	4,5 m	1,8 m
2,5 m	5,2 m	11,9 m	10,5 m	4,2 m	2,0 m	5,9 m	13,1 m	12,0 m	4,7 m	2,1 m
3 m	5,5 m	13,4 m	11,2 m	4,9 m	2,2 m	6,5 m	15,0 m	13,5 m	5,2 m	2,4 m
3,5 m	5,6 m	14,5 m	11,7 m	5,5 m	2,5 m	7,2 m	16,6 m	14,7 m	5,8 m	2,8 m
4 m	5,8 m	15,3 m	12,0 m	6,1 m	2,6 m	7,6 m	18,2 m	15,5 m	6,5 m	3,1 m

ELH EL LED 3h SC RM CORRIDOR

Item number	GTIN
EN10080012	4015120080012

Detailed product description

- Single-battery 3-h emergency light for recessed ceiling mounting
- Function control and self-monitoring
 - Continuous charge monitoring
 - Automatic, weekly function test and annual operating time check
 - Test results indicated by coloured LEDs (green/red)
- Optionally, operation in continuous or stand-by mode possible
- Downwards light emission and optimised for illumination of corridors
- Includes rechargeable NiCd battery with reverse polarity protected connection
- Connection via plug-in terminals (through-wiring possible)
- UV-stabilised polycarbonate housing