

## ELSA-2 DL 225 OP 110° 1800 840 PD IR PS DALI WH

**Item number** E010299667  
**GTIN** 4015120299667



### Technical data

GENERAL	
Device category	Downlight
Product information	Do not cover the downlight directly with insulating material.
User interface	IR remote control, DALI-Bus
Remote controllable	✓
Conformity	CE, EAC, RoHS, WEEE
Warranty	5 years

ATTACHMENT	
Installation type	Recessed mounting
Installation position	Ceiling
Installation dimension	Installation depth: 70 mm, Ø 225 mm
Type of connection	Push terminal
Connectable wire cross section	0.5 - 2.5 mm <sup>2</sup>
Number of contacts	5

HOUSING	
Dimensions	Height/Depth 60 mm, Ø 240 mm
Weight	1300 g
Material	powder-coated aluminium
Protection type	IP20
Permissible ambient temperature	-20 °C...+40 °C
Relative humidity	5 - 93 %, non-condensing
Colour	white, similar to RAL 9003
Glow wire test in accordance with IEC 60695-2-10	650 °C

ELECTRICAL VERSION	
Control system	DALI
Protection class	I

DALI	200 - 240 V ~/~	LED 4000 K	CRI 80	Phi 1850 lm	94 lm/W	UGR ≤ 25
IP20		Ø 6 m				

### Product description

- LED downlight, 4000K with opal cover (diffuser), 18W, for ceiling mounting without additional accessories
- High light quality and system performance
- Operating device DALI, included
- Integrated FLAT MINI DALI presence detector with 360°
- field of detection
- Range of up to 6 m in diameter at a recommended installation height of 2.5 m (maximum installation height 3 m) for use in small rooms and passageways with no or little natural lighting
- Integrated DALI power supply for fitting a DALI bus (broadcast) with additional lights
- Control HVAC or ON/OFF lights as a potential-free contact in conjunction with the DALI switch from ESYLUX

### Offers special product features like:

- Integrated presence detector with DALI bus voltage supply

Nominal voltage	220 - 240 V AC/DC / 50 - 60 Hz
Stand-by consumption	< 0.5 W

LIGHT	
Diffuser	opal
Light emission	direct
Beam angle	110 °
Unified Glare Rating	≤ 25
Flicker factor	0 %
Rated output P	19.5 W
Luminous flux	1850 lm
Luminous efficacy	94 lm/W
Colour temperature	4000 K
Colour rendering index Ra	> 80
Colour tolerance	1SDCM
Color Quality Scale	>80
L70B10 lifetime at 25°C	60000 h
Life time L70B50 at 25 °C	60000 h
Life time L80B10 at 25 °C	40000 h
Life time L80B50 at 25 °C *	40000 h
Life time L90B10 at 25 °C	20000 h
Life time L90B50 at 25 °C	20000 h
Photobiological safety	RG0

SENSORS	
Detection angle	360°
Detection range diagonally	Ø 6 m
Detection range head-on	Ø 3 m
Detection range presence	Ø 2.5 m

## ELSA-2 DL 225 OP 110° 1800 840 PD IR PS DALI WH

<b>Item number</b>	<b>GTIN</b>
EO10299667	4015120299667

Field of detection	28 m <sup>2</sup>
Range adjustment	mechanically with included cut to size lens mask
Recommended installation height	2.5 m
Max. mounting height	3 m
Light measurement	mixed light
Level of brightness	100 - 1000 lx

### CHANNELS (LIGHTING / HVAC)

Number of light channels	1
Push button input HVAC	-
Channel	<b>C1</b> Lighting
Function	Switching, Dimming
Switch contact	Bus system
Push button input	-
Impulse mode	-

Switch-off delay time	60 s...240 min (adjustable in steps)
Orientation light	10 - 40 % luminous efficiency
Switch-off delay time, orientation light	60 s...240 min
Channel	<b>C3</b> with accessory (ACTUATOR FULL AUTO C3 DALI)
Function	Switching
Switching capacity	10 A (12 V DC / 230 V AC)
Switch contact	make contact / floating
Push button input	✓
Switch-off delay time	60 s...120 min (adjustable in steps)
Channel	<b>C4</b> with accessory (ACTUATOR SEMI AUTO C4 DALI)
Function	Switching
Switching capacity	10 A (12 V DC / 230 V AC)
Switch contact	make contact / floating
Push button input	✓
Switch-off delay time	60 s...120 min (adjustable in steps)

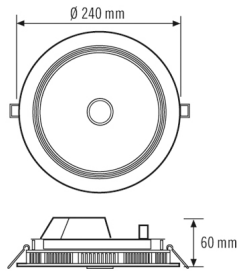
### Accessories

Product designation	Item number	Product description	GTIN
<b>Adapter</b>			
ELSA-2 RING 225	EO10300264	Adapter ring 225-265 mm for ELSA-2 series	4015120300264
<b>Electrical accessories</b>			
JUNCTION BOX 5-POLE BK	EO10430992	Universal junction box, black, 5-pin, 2.5 mm <sup>2</sup>	4015120430992
ACTUATOR FULL AUTO C3 DALI	EP10427473	Modul for the conversion of bus commands from the DALI presence detector and other light controls into switching signals (fully automatic)	4015120427473
ACTUATOR SEMI AUTO C4 DALI	EP10427480	Modul for the conversion of bus commands from the DALI presence detector and other light controls into switching signals (semi-automatic)	4015120427480
<b>Mounting</b>			
ELSA-2 MOUNTING FRAME 225 SM WH	EO10300899	Ceiling installation frame for ELSA-2 225 series	4015120300899
<b>Remote control</b>			
ESY-Pen	EP10425356	ESY-Pen and ESY-App, two tools for every task: (1) Parameterisation, (2) remote control, (3) light measurement, (4) project management	4015120425356
REMOTE CONTROL PDi DALI	EP10425899	IR remote control for DALI presence detectors and motion detectors	4015120425899

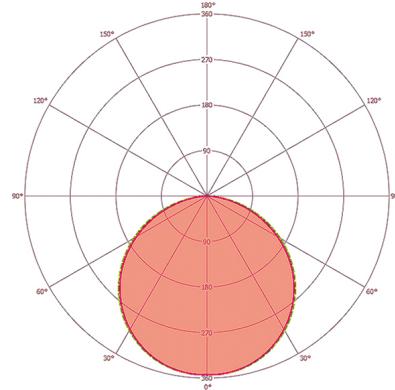
## ELSA-2 DL 225 OP 110° 1800 840 PD IR PS DALI WH

**Item number**      **GTIN**  
 EO10299667      4015120299667

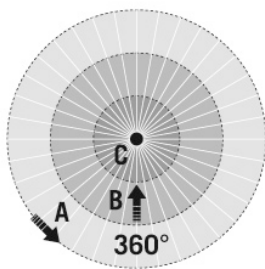
### Dimension drawing



### Light distribution



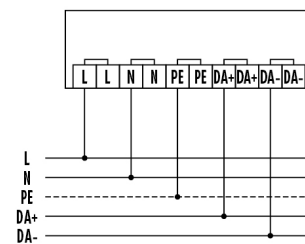
### Field of detections



### Detection range

■ Diagonally (A)	Ø 6 m
■ Frontal (B)	Ø 3 m
■ Presence area (C)	Ø 2.5 m

### Circuit diagram



Standard operation.

### Detailed product description

- LED downlight, 18 W for ceiling mounting
- Recessed luminaire with opal cover (diffuser)
- High-quality housing, aluminium lamp body, white powder-coated (RAL 9003)
- Can be used for ceiling mounting without additional accessories
- Colour temperature: 4000 K with the lowest colour tolerances
- Luminous flux: 1750 lm
- Rated life time L80B50 at 25 °C: 40000 h
- Operating device: on/off (included)
- Integrated FLAT MINI DALI presence detector with 360°
- field of detection
- Range of up to 6 m in diameter at a recommended installation height of 2.5 m
- Automatic light control of DALI electronic ballasts to achieve a constant brightness level, depending on presence and natural light (with DALI-output)
- Default settings ensure immediate operability
- Simple programming using remote control. Detector can be used as a fully automatic or semi-automatic device
- Lowering of the luminous efficiency after expiration of the time setting for use as an orientation light for hallways and passageways
- Integrated DALI power supply for fitting a DALI bus (broadcast) with additional lights
- Control HVAC or ON/OFF lights as a potential-free contact in conjunction with the DALI switch from ESYLUX