

## DRIVER SET TW 38W RJ45 WAGO WINSTA DALI DT8

<b>Item number</b>	<b>GTIN</b>
EQ10127755	4015120127755



### Product description

- Plug-and-play LED driver set for Tunable White ESYLUX satellite LED lights
- Max. power output 38 W
- Output current 700 mA
- Connected to the driver on the primary side: 1 m black cable with WAGO WINSTA 770 5-pin black/blue plug
- Connected to the driver on the secondary side: 1 m blue cable (cold-white channel) and 1 m red cable (warm-white channel) with RJ45 plugs

### Technical data

#### GENERAL

Device category	Control gear
User interface	DALI-Bus
Conformity	CE, EAC, RoHS, WEEE
Product-specific information	Meets DALI-2 standard

#### ATTACHMENT

Installation type	Recessed mounting
Installation position	Ceiling
Type of connection	Plug
Connector	WAGO WINSTA® 770, RJ45
Number of contacts	5
Length of cable	1 m

#### HOUSING

Dimensions	Length 215 mm x Width 70 mm x Height/ Depth 31 mm
------------	--

Weight	454 g
Material	PC + ABS
Protection type	IP20
Permissible ambient temperature	0 °C...+40 °C
Relative humidity	max. 80 %, non-condensing
Colour	Black

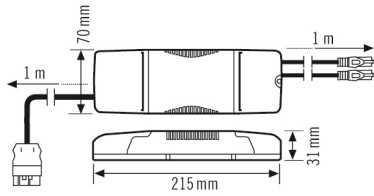
#### ELECTRICAL VERSION

Control system	DALI-2
Protection class	II
Nominal voltage	220 – 240 V AC/DC / 50 – 60 Hz
Output voltage	20 – 60 V DC
In-rush current	26.4 A / 224 µs
Output current	700 mA
Power consumption	35 W
Power consumption	150 mA
Stand-by consumption	< 0.25 W

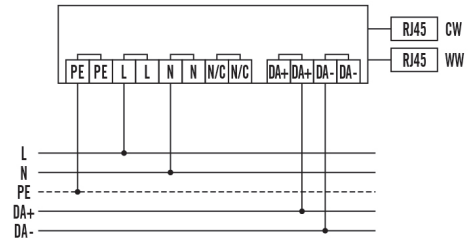
## DRIVER SET TW 38W RJ45 WAGO WINSTA DALI DT8

**Item number**      **GTIN**  
 EQ10127755      4015120127755

### Dimension drawing



### Circuit diagram



*Standard operation.*

### Detailed product description

- Plug-and-play LED driver set for Tunable White ESYLUX satellite LED lights
- Max. power output 38 W
- Output current 700 mA
- Connected to the driver on the primary side: 1 m black cable with WAGO WINSTA 770 5-pin black/blue plug
- Connected to the driver on the secondary side: 1 m blue cable (cold-white channel) and 1 m red cable (warm-white channel) with RJ45 plugs