

DRIVER-SET 30W RJ45 WAGO WINSTA DALI

Item number	GTIN
EQ10127762	4015120127762



Product description

- DALI plug-and-play LED driver set for ESYLUX satellite LED lights with constant light colour
- Max. power output 30 W
- Output current 700 mA
- Connected to the driver on the primary side: 150 mm white cable to a junction box plus 1 m black cable with WAGO WINSTA 770 5-pin black/blue plug
- Connected to the driver on the secondary side: 1 m blue cable with RJ45 plug

Technical data

GENERAL

Device category	Control gear
User interface	DALI-Bus
Conformity	CE, EAC, RoHS, WEEE
Test symbol	ENEC 05
Product-specific information	Meets DALI-2 standard

ATTACHMENT

Installation type	Recessed mounting
Installation position	Ceiling
Type of connection	Plug
Connector	WAGO WINSTA® 770, RJ45
Connectable wire cross section	0.75 – 2.5 mm ²
Number of contacts	5
Length of cable	1 m

HOUSING

Dimensions	Length 103 mm x Width 68 mm x Height/ Depth 30 mm
------------	--

Weight	453 g
Material	PC + ABS
Protection type	IP20
Permissible ambient temperature	0 °C...+40 °C
Relative humidity	10 – 90%, non-condensing
Colour	black/white

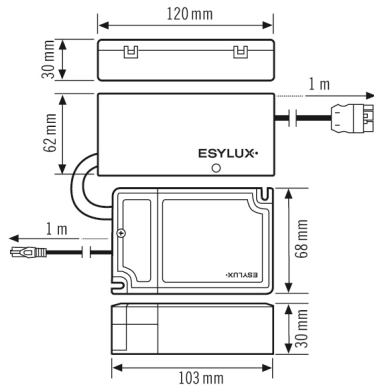
ELECTRICAL VERSION

Control system	DALI-2
Protection class	II
Nominal voltage	200 – 240 V ~ / 50 – 60 Hz
Output voltage	3 – 42 V DC
In-rush current	30 A / 120 µs
Output current	700 mA
Power consumption	34 W
Power consumption	300 mA
Stand-by consumption	< 0.5 W

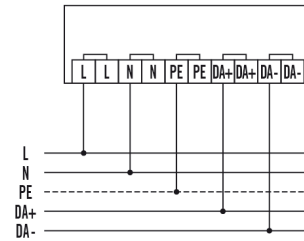
DRIVER-SET 30W RJ45 WAGO WINSTA DALI

Item number GTIN
 EQ10127762 4015120127762

Dimension drawing



Circuit diagram



Standard operation.

Detailed product description

- DALI plug-and-play LED driver set for ESYLUX satellite LED lights with constant light colour
- Max. power output 30 W
- Output current 700 mA
- Connected to the driver on the primary side: 150 mm white cable to a junction box plus 1 m black cable with WAGO WINSTA 770 5-pin black/blue plug
- Connected to the driver on the secondary side: 1 m blue cable with RJ45 plug