

SMARTDRIVER-2 TW IR 2C+2x6 ELC

Item number

EC10431487

GTIN

4015120431487



Technical data

GENERAL

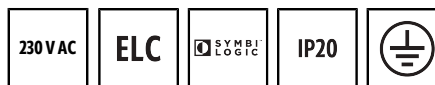
Device category	Control
Product information	ELC lighting systems combine compatible components via plug-and-play: ELC main lighting, control unit and sensor system. Alternatively: The ELC lights are also suitable for plug-and-play installation outside ELC lighting systems if suitable driver sets (accessories) are used
User interface	IR remote control, Push button input
Remote controllable	✓
Conformity	CE, EAC, RoHS, WEEE
Warranty	5 years

ATTACHMENT

Installation type	Recessed mounting
Installation position	Ceiling
Installation dimension	Installation length: 575 mm x Installation width: 285 mm x Installation depth: 125 mm,
Type of connection	Push terminal
Connectable wire cross section	1.5 – 2.5 mm ²

HOUSING

Dimensions	Length 555 mm x Width 262 mm x Height/Depth 85 mm
Weight	3414 g
Material	Steel, galvanised
Protection type	IP20
Permissible ambient temperature	0 °C...+40 °C



Product description

- ELC control unit with integrated constant lighting control for superb energy efficiency
- SymbiLogic technology for energy-efficient human centric lighting in the workplace
- Plug-and-play connection of up to 6 ELC lights (ELC=ESYLUX Light Control) with Tunable White
- Two push button inputs for conventional buttons (230 V)
- Optional 8-button keypad (accessory) for manual override
- Manual override and call-up of scenes in two separate light channels
- Fast plug-and-play connection of lights via RJ45 plug-in connections
- Can be easily networked with additional ELC control units via the plug-in connection
- Basic system designed for a luminaire connection (RJ45) of 3 m
- Expansion possible with DALI lights via integrated DALI bus outputs
- Presence-dependent HVAC switching using a DALI switch actuator (DALI switch), available separately

Relative humidity	5 – 93 %, non-condensing
Colour	white

ELECTRICAL VERSION

Control system	ELC (ESYLUX Light Control), DALI
Protection class	I
Nominal voltage	230 V ~ / 50 – 60 Hz
Output voltage	48 – 48 V DC
Output current	4200 mA
Power consumption	190 W
Stand-by consumption	< 0.5 W

CHANNELS (LIGHTING / HVAC)

Number of light channels	2
Number of control units per group	6
Number of light groups	10
Push button input lighting	2
Number of HVAC-channels	2
Number of scenes	13
Orientation light	disabled/10 – 50 %, 2 values can be selected
Constant light control	✓
Orientation light duration or time	✓
HCL-lighting control	✓
Number of outputs luminaires ELC	6
Number of outputs luminaires DALI	2

Factory settings

SMARTDRIVER-2 TW IR 2C+2 x6 ELC

Item number	GTIN
EC10431487	4015120431487

GENERAL	
Sensitivity	100 %
SymbolLogic	✓
Afterglow luminous efficiency	10 %
Afterglow duration	5 min
Orientation light ON	-
Orientation light, depending on brightness	✓
Switching threshold for orientation light	500 lx
Deviation (%)	0 %
Luminous efficiency switch-on value	50 %

Colour temperature switch-on value	4000 K
------------------------------------	--------

CHANNELS (LIGHTING / HVAC)	
Channel	C1 Lighting
Operating mode	fully automatic
Level of brightness/switching threshold	500 lx
Switch-off delay time	5 min
Luminous efficiency of orientation light	10 %
Duration of switch-off warning	60 s

SMARTDRIVER-2 TW IR 2C+2 x6 ELC

Item number	GTIN
EC10431487	4015120431487

System components

Product designation	Item number	Product description	GTIN
Accessories			
FERRITE-SET x4	EC10429972	Set of 4 ferrite cores (folding ferrite) for shielding up to two RJ45 cables per ferrite core on the SMARTDRIVER-2.	4015120429972
Cable			
CABLE RJ10 10m WH	EC10431500	Connection cable RJ10, 10 m	4015120431500
CABLE RJ10-OPEN END 10m WH	EC10431517	Connection cable RJ10 Open end, 10 m	4015120431517
CABLE RJ11 10m WH	EC10431524	Connection cable RJ11, 10 m, white	4015120431524
CABLE RJ45 3m BL	EC10431548	Connection cable RJ45, 3 m, blue	4015120431548
CABLE RJ45 3m RD	EC10431555	Connection cable RJ45, 3 m, red	4015120431555
CABLE RJ45 5m RD	EQ10019890	RJ45 connection cable, 5 m, red	4015120019890
CABLE RJ45 5m BL	EQ10019982	Connection cable RJ45, 5 m, blue	4015120019982
CABLE RJ45 10m BL	EQ10019999	Connection cable RJ45, 10 m, blue	4015120019999
CABLE RJ45 10m RD	EQ10020155	Connection cable RJ45, 10 m, red	4015120020155
CABLE-SET-2 RJ45 5m TW x6	EC10431968	Connection cable set for SMARTDRIVER x6 TW series	4015120431968
CABLE-SET-2 RJ45 10m TW x6	EC10431975	Connection cable set for SMARTDRIVER x6 TW series	4015120431975
Ceiling-mounted presence detector			
PD-C 360i/8 ELC	EP10427602	Presence detector with 360° field of detection for ceiling mounting	4015120427602
PD-C 360i/24 ELC	EP10427619	Presence detector with 360° field of detection for ceiling mounting	4015120427619
PD 360i/8 BASIC ELC	EB10431357	Presence detector for ESYLUX Light Control with 360° field of detection for ceiling mounting	4015120431357
Push button			
PUSH BUTTON x8 TW ELC	EC10430930	DALI 8 x push button Tunable White	4015120430930
PUSH BUTTON x8 CLASSROOM ELC	EC10431241	DALI 8-way push button	4015120431241
PUSH BUTTON x4 PATIENT ROOM ELC	EC10431258	DALI 4-way push button	4015120431258
PUSH BUTTON x8 PATIENT ROOM ELC	EC10431265	DALI 8-way push button	4015120431265
Recessed light			
CELINE-2 PNL 600 DDP OP 3800 8TW IP20 ELC	EQ10132322	LED light with opal cover (diffuser)	4015120132322
CELINE-2 PNL 600 DDP TR 4200 8TW IP20 ELC	EQ10132353	LED light with prismatic cover (diffuser)	4015120132353
CELINE-2 PNL 625 DDP OP 3800 8TW IP20 ELC	EQ10132384	LED light with opal cover (diffuser)	4015120132384
CELINE-2 PNL 625 DDP TR 4200 8TW IP20 ELC	EQ10132414	LED light with prismatic cover (diffuser)	4015120132414

Accessories

Product designation	Item number	Product description	GTIN
Accessories			
FERRITE-SET x4	EC10429972	Set of 4 ferrite cores (folding ferrite) for shielding up to two RJ45 cables per ferrite core on the SMARTDRIVER-2.	4015120429972
Cable			
CABLE-SET RJ45 10m TW x6	EC10431173	Connection cable set for SMARTDRIVER x6 TW series	4015120431173
CABLE RJ45 5m RD	EQ10019890	RJ45 connection cable, 5 m, red	4015120019890
CABLE RJ45 5m BL	EQ10019982	Connection cable RJ45, 5 m, blue	4015120019982

SMARTDRIVER-2 TW IR 2C+2x6 ELC

Item number	GTIN
EC10431487	4015120431487

Accessories

Product designation	Item number	Product description	GTIN
CABLE RJ45 10m RD	EQ10020155	Connection cable RJ45, 10 m, red	4015120020155
CABLE RJ45 10m BL	EQ10019999	Connection cable RJ45, 10 m, blue	4015120019999
CABLE RJ10 10m WH	EC10431500	Connection cable RJ10, 10 m	4015120431500
CABLE RJ10-OPEN END 10m WH	EC10431517	Connection cable RJ10 Open end, 10 m	4015120431517
CABLE RJ11 10m WH	EC10431524	Connection cable RJ11, 10 m, white	4015120431524
CABLE-SET RJ45 5m TW x4	EC10431128	Connection cable set for SMARTDRIVER x4 TW series	4015120431128
CABLE-SET RJ45 10m TW x4	EC10431135	Connection cable set for SMARTDRIVER x4 TW series	4015120431135
CABLE RJ45 3m BL	EC10431548	Connection cable RJ45, 3 m, blue	4015120431548
CABLE RJ45 3m RD	EC10431555	Connection cable RJ45, 3 m, red	4015120431555
CABLE-SET-2 RJ45 5m TW x6	EC10431968	Connection cable set for SMARTDRIVER x6 TW series	4015120431968
CABLE-SET-2 RJ45 10m TW x6	EC10431975	Connection cable set for SMARTDRIVER x6 TW series	4015120431975

Ceiling-mounted presence detector

PD-C 360i/8 ELC	EP10427602	Presence detector with 360° field of detection for ceiling mounting	4015120427602
PD-C 360i/24 ELC	EP10427619	Presence detector with 360° field of detection for ceiling mounting	4015120427619
PD 360i/8 BASIC ELC	EB10431357	Presence detector for ESYLUX Light Control with 360° field of detection for ceiling mounting	4015120431357

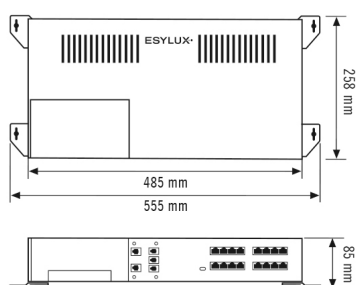
Electrical accessories

ACTUATOR FULL AUTO C3 DALI	EP10427473	Modul for the conversion of bus commands from the DALI presence detector and other light controls into switching signals (fully automatic)	4015120427473
ACTUATOR SEMI AUTO C4 DALI	EP10427480	Modul for the conversion of bus commands from the DALI presence detector and other light controls into switching signals (semi-automatic)	4015120427480

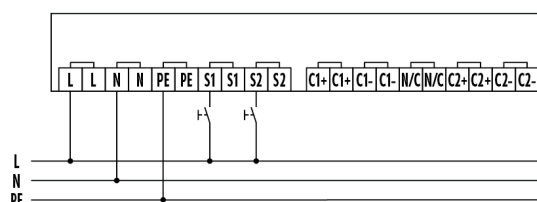
Push button

PUSH BUTTON x8 TW ELC	EC10430930	DALI 8 x push button Tunable White	4015120430930
PUSH BUTTON x8 CLASSROOM ELC	EC10431241	DALI 8-way push button	4015120431241
PUSH BUTTON x8 PATIENT ROOM ELC	EC10431265	DALI 8-way push button	4015120431265
PUSH BUTTON x4 PATIENT ROOM ELC	EC10431258	DALI 4-way push button	4015120431258

Dimension drawing



Circuit diagram



Standard operation.

SMARTDRIVER-2 TW IR 2C+2 x6 ELC

Item number	GTIN
EC10431487	4015120431487

Detailed product description

- ELC control unit with integrated constant lighting control for superb energy efficiency
- SymbiLogic technology for energy-efficient human centric lighting in the workplace
- Plug-and-play connection of up to 6 ELC lights (ELC=ESYLUX Light Control) with Tunable White
- Two push button inputs for conventional buttons (230 V)
- Optional 8-button keypad (accessory) for manual override
- Manual override and call-up of scenes in two separate light channels
- Fast plug-and-play connection of lights via RJ45 plug-in connections
- Can be easily networked with additional ELC control units via the plug-in connection
- Basic system designed for a luminaire connection (RJ45) of 3 m
- Expansion possible with DALI lights via integrated DALI bus outputs
- Presence-dependent HVAC switching using a DALI switch actuator (DALI switch), available separately