

# DATA SHEET

# ESYLUX

## ALVA BL 940/170 TR 360° 1200 840 DALI AN

### Item number

EL10820229

### GTIN

4015120820229



### Technical data

#### GENERAL

Device category	Bollard light
Product information	Intense sunlight over a longer period of time can change the color tone.
Included in delivery	3x screw, 3x wall plugs
User interface	DALI-Bus
Remote controllable	-
Conformity	CE, EAC, RoHS, WEEE
Product-specific information	Meets DALI-2 standard
Warranty	5 years

#### ATTACHMENT

Installation type	Free standing
Installation position	Floor
Type of connection	Push terminal
Connectable wire cross section	1.5 - 2.5 mm <sup>2</sup>
Number of contacts	5

#### HOUSING

Dimensions	Height/Depth 940 mm, Ø 170 mm
Weight	7640 g
Material	powder-coated aluminium
Protection type	IP65
Permissible ambient temperature	-25 °C...+40 °C
Relative humidity	5 - 95 %, non-condensing
Impact resistance	IK10
Colour	graphite grey, similar to RAL 7024

DALI	200 - 240 V AC/DC	LED 4100 K	CRI 83	Phi 1350 lm	79 lm/W	IP65
------	-------------------	------------	--------	-------------	---------	------



### Product description

- LED DALI bollard light made from high-grade aluminium
- Dirt-repellent thanks to powder coating with lotus effect
- Integrated ballast (DALI), installation without further accessories
- High-quality housing, die-cast aluminium, charcoal grey powder-coated, similar to RAL 7024
- Colour temperature 4000 K

### Offers special product features like:

- Protected against sea air

#### ELECTRICAL VERSION

Control system	DALI
Protection class	I
Nominal voltage	200 - 240 V AC/DC / 50 - 60 Hz
In-rush current	12 A / 57 µs
Leakage current	0.31 mA
Power consumption	70 mA

#### LIGHT

Diffuser	transparent
Light emission	direct
Beam angle	159 °
Flicker factor	<3 %
Rated output P	17 W
Luminous flux	1350 lm
Luminous efficacy	79 lm/W
Colour temperature	4100 K
Colour rendering index Ra	> 80
Colour tolerance	1 SDCM
Color Quality Scale	80
L70B10 lifetime at 25 °C	105000 h
Life time L70B50 at 25 °C	110000 h
Life time L80B10 at 25 °C	65000 h
Life time L80B50 at 25 °C	70000 h
Life time L90B10 at 25 °C	35000 h
Life time L90B50 at 25 °C	35000 h
Photobiological safety	RG0

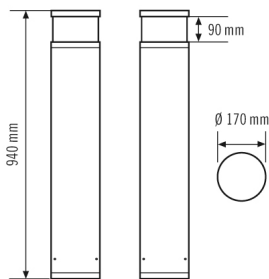
ALVA BL 940/170 TR 360° 1200 840 DALI AN

Item number	GTIN
EL10820229	4015120820229

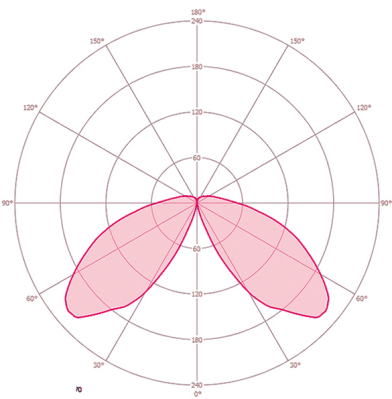
Accessories

Product designation	Item number	Product description	GTIN
<b>Mounting</b>			
ALVA GROUND SPIKE 170	EL10820199	Ground anchor galvanised for installation of bollard lights in concrete foundation or solid ground	4015120820199

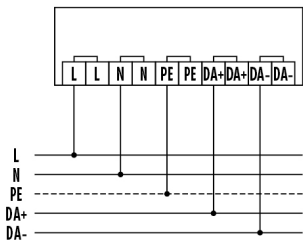
Dimension drawing



Light distribution



Circuit diagram



Standard operation.

Detailed product description

- LED DALI bollard light made from high-grade aluminium
- Dirt-repellent thanks to powder coating with lotus effect
- Lamp head: crystal clear with no-glare light emission
- Light distribution: 360°
- Integrated ballast (DALI), installation without further accessories
- DALI interface for 2-pin DALI control cable
- High-quality housing, die-cast aluminium, charcoal grey powder-coated, similar to RAL 7024
- Installation type: mounting plate for screwing on to a base, optionally via a ground anchor (accessories)
- Colour temperature 4000 K